



FINAL

## Table of Contents

Overview Map

Map Sheet Reference Index

Road Sign Plan Map Series

Reports

    All Signs in Plan

    Signs Sorted by County/State

    Signs Sorted by Jurisdiction

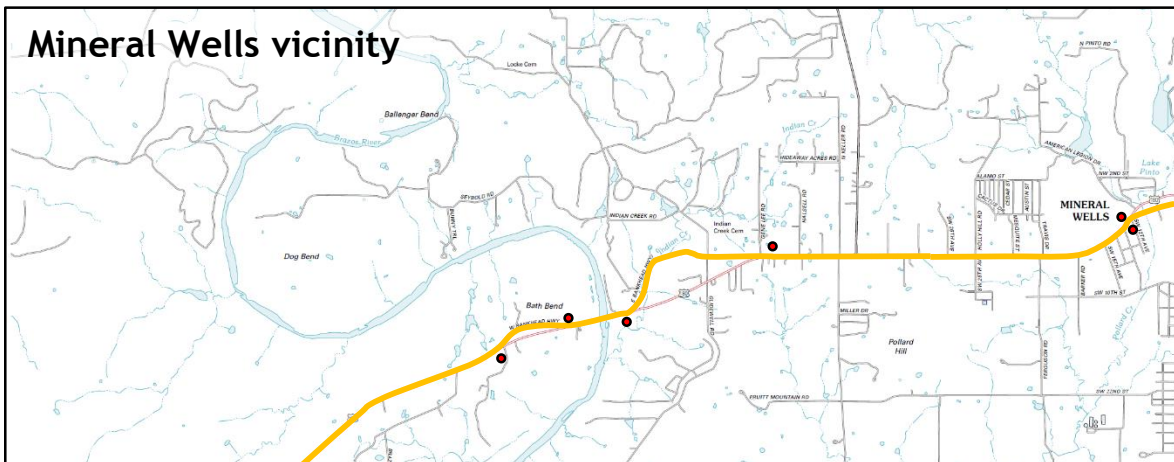
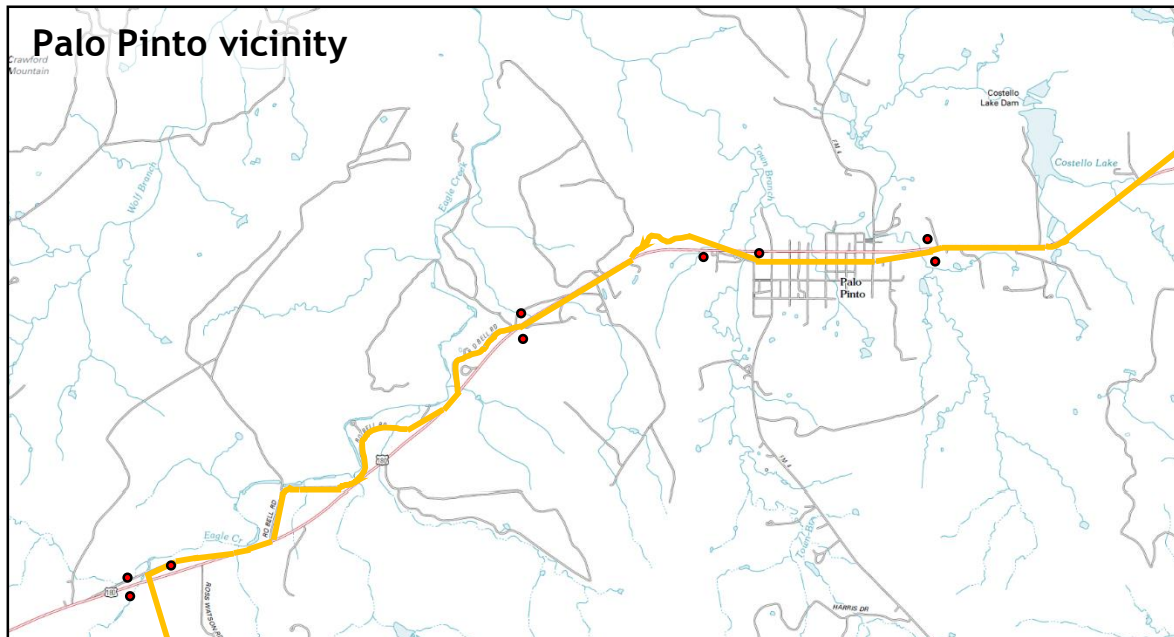
Road Sign Plan Specification Sheets

## Palo Pinto County Sign Plan

# Overview Map

**FINAL**

INSTALLATION LOCATION:  
Go to "All Signs in Plan" page



### Legend

#### Category

— Bankhead Highway Route, ca. 1921

• Proposed Signage Locations

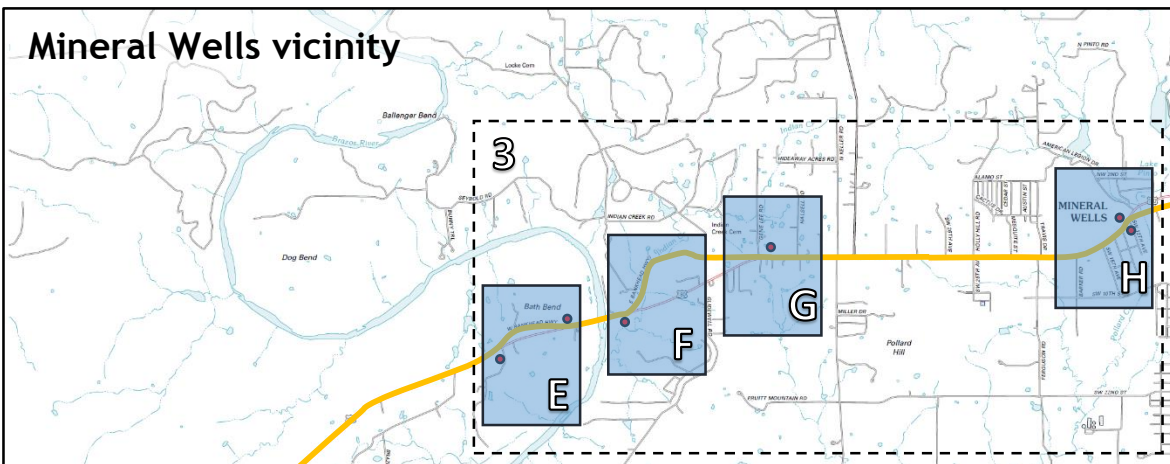
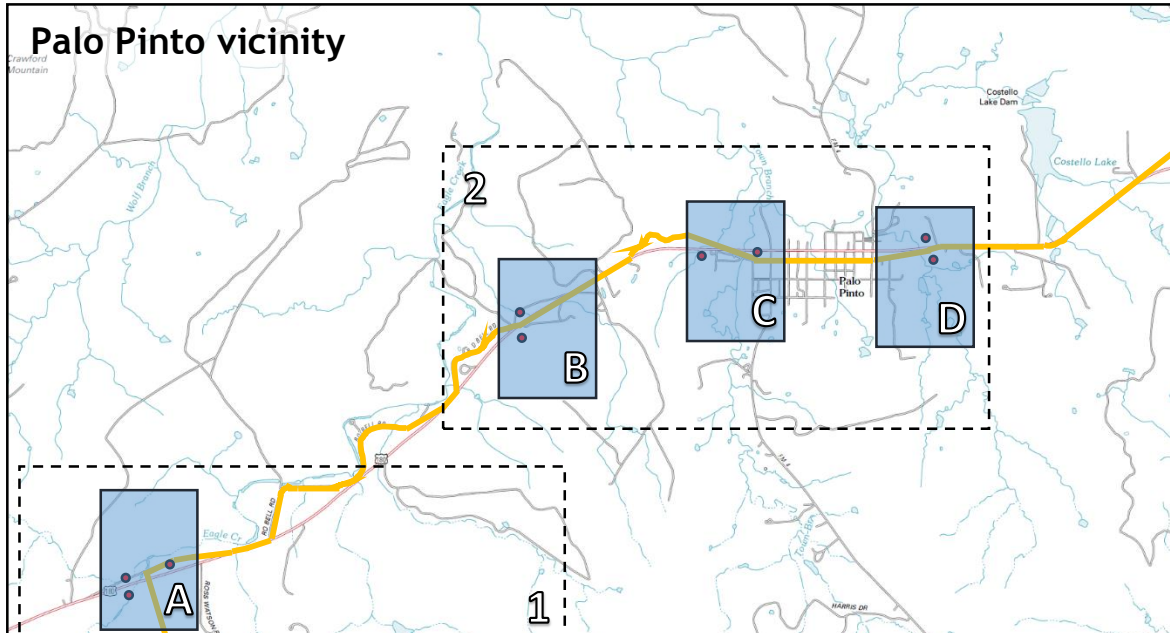


## Palo Pinto County Sign Plan

# Map Sheet Index

**FINAL**

INSTALLATION LOCATION:  
Go to "All Signs in Plan" page



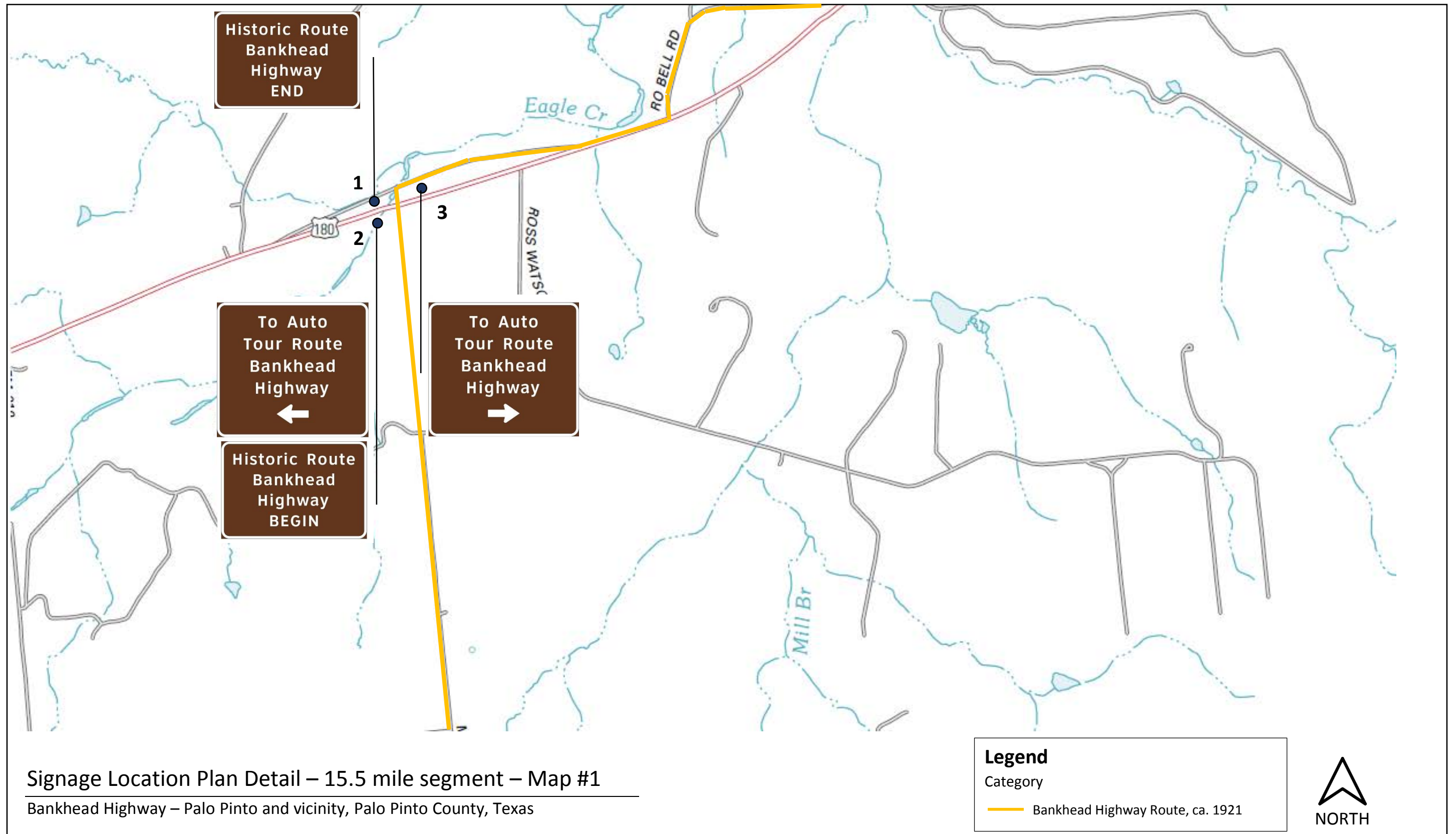
### Legend

#### Category

— Bankhead Highway Route, ca. 1921

• Proposed Signage Locations

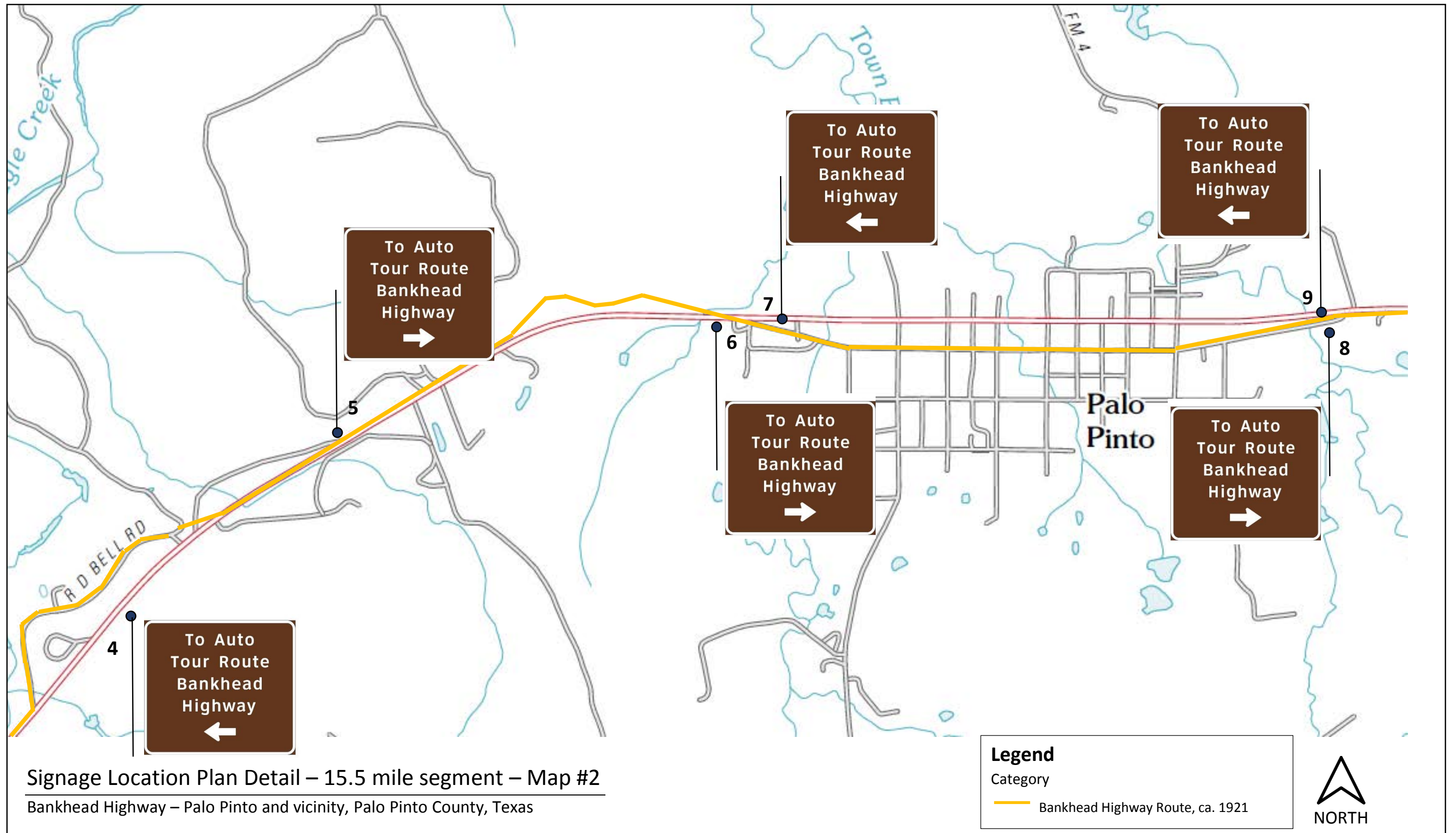




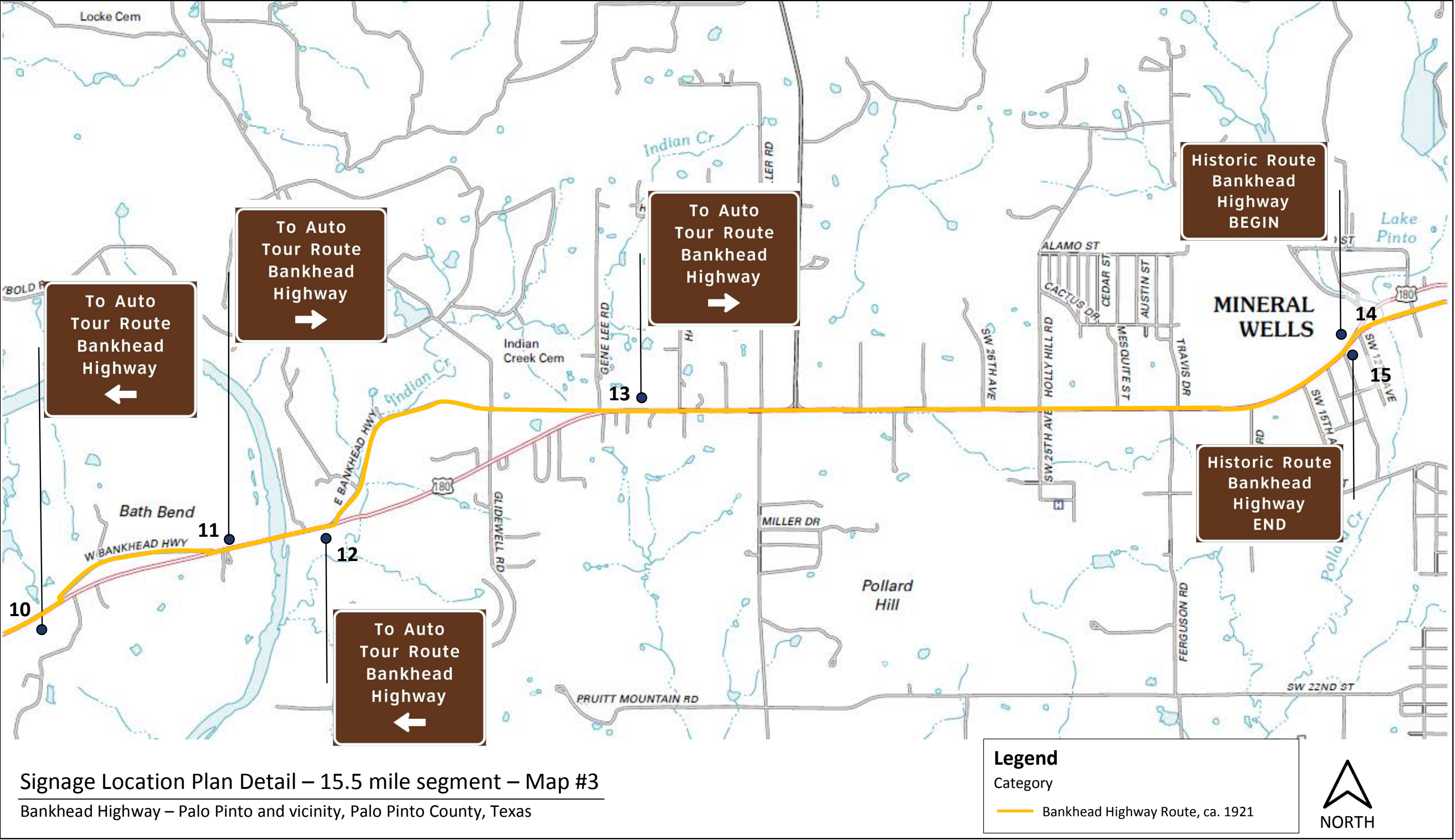
### Signage Location Plan Detail – 15.5 mile segment – Map #1

Bankhead Highway – Palo Pinto and vicinity, Palo Pinto County, Texas

*This page intentionally left blank*



*This page intentionally left blank*



---

*This page intentionally left blank*



Sources: Google Earth Map Layers, Imagery Date, 2014; Google Earth KMZ file of historic Bankhead Highway alignment provided by HHM, Inc.

### Legend

Category

— Bankhead Highway Route, ca. 1921

● <sup>1</sup> Signs

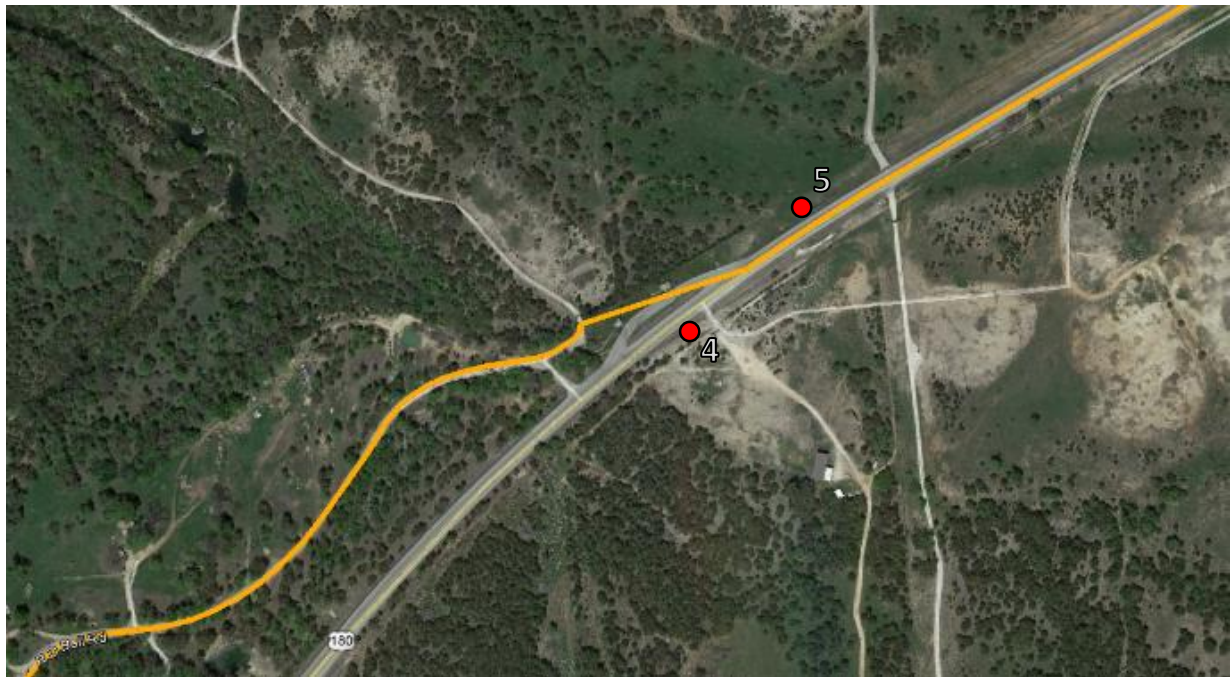
SIGN ID	SIGN TYPE	ROAD NAME	DIRECTION	ROAD JURISDICTION
1	Historic Route/End	US 180	West	TxDOT ROW
2	Historic Route/Begin To Auto Tour Route/Left Arrow	US 180	East	TxDOT ROW
3	To Auto Tour Route/Right Arrow	US 180	West	TxDOT ROW

## Enlarged Plan – Detail Map A

SCALE: 1:500

Bankhead Highway – Palo Pinto and vicinity, Palo Pinto County, Texas





Sources: Google Earth Map Layers, Imagery Date, 2014; Google Earth KMZ file of historic Bankhead Highway alignment provided by HHM, Inc.

### Legend

#### Category

— Bankhead Highway Route, ca. 1921

● <sup>1</sup> Signs

SIGN ID	SIGN TYPE	ROAD NAME	DIRECTION	ROAD JURISDICTION
4	To Auto Tour Route/Left Arrow	US 180	West	TxDOT ROW
5	To Auto Tour Route/Right Arrow	US 180	East	TxDOT ROW

## Enlarged Plan – Detail Map B

SCALE: 1:500

Bankhead Highway – Palo Pinto and vicinity, Palo Pinto County, Texas





Sources: Google Earth Map Layers, Imagery Date, 2014; Google Earth KMZ file of historic Bankhead Highway alignment provided by HHM, Inc.

### Legend

#### Category

— Bankhead Highway Route, ca. 1921

● <sup>1</sup> Signs

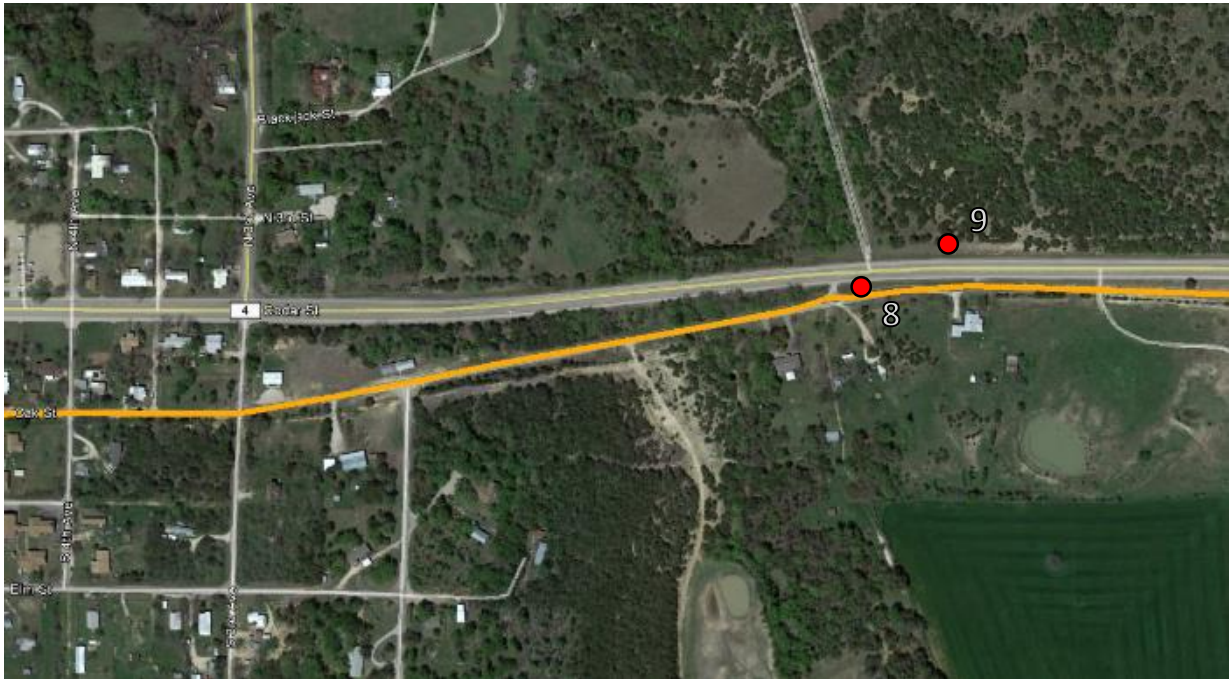
SIGN ID	SIGN TYPE	ROAD NAME	DIRECTION	ROAD JURISDICTION
6	To Auto Tour Route/Left Arrow	US 180	East	TxDOT ROW
7	To Auto Tour Route/Right Arrow	US 180	West	TxDOT ROW

## Enlarged Plan – Detail Map C

SCALE: 1:500

Bankhead Highway – Palo Pinto and vicinity, Palo Pinto County, Texas





Sources: Google Earth Map Layers, Imagery Date, 2014; Google Earth KMZ file of historic Bankhead Highway alignment provided by HHM, Inc.

### Legend

#### Category

— Bankhead Highway Route, ca. 1921

● <sup>1</sup> Signs

SIGN ID	SIGN TYPE	ROAD NAME	DIRECTION	ROAD JURISDICTION
8	To Auto Tour Route/Right Arrow	US 180	East	TxDOT ROW
9	To Auto Tour Route/Left Arrow	US 180	West	TxDOT ROW

## Enlarged Plan – Detail Map D

SCALE: 1:500

Bankhead Highway – Palo Pinto and vicinity, Palo Pinto County, Texas





Sources: Google Earth Map Layers, Imagery Date, 2014; Google Earth KMZ file of historic Bankhead Highway alignment provided by HHM, Inc.

### Legend

#### Category

— Bankhead Highway Route, ca. 1921

● <sup>1</sup> Signs

SIGN ID	SIGN TYPE	ROAD NAME	DIRECTION	ROAD JURISDICTION
10	To Auto Tour Route/Left Arrow	US 180	East	TxDOT ROW
11	To Auto Tour Route/Right Arrow	US 180	West	TxDOT ROW

## Enlarged Plan – Detail Map E

SCALE: 1:500

Bankhead Highway – Palo Pinto and vicinity, Palo Pinto County, Texas





Sources: Google Earth Map Layers, Imagery Date, 2014; Google Earth KMZ file of historic Bankhead Highway alignment provided by HHM, Inc.

### Legend

Category

— Bankhead Highway Route, ca. 1921

● <sup>1</sup> Signs

SIGN ID	SIGN TYPE	ROAD NAME	DIRECTION	ROAD JURISDICTION
12	To Auto Tour Route/Left Arrow	US 180	East	TxDOT ROW

Enlarged Plan – Detail Map F

SCALE: 1:500

Bankhead Highway – Palo Pinto and vicinity, Palo Pinto County, Texas





Sources: Google Earth Map Layers, Imagery Date, 2014; Google Earth KMZ file of historic Bankhead Highway alignment provided by HHM, Inc.

### Legend

#### Category

— Bankhead Highway Route, ca. 1921

● <sup>1</sup> Signs

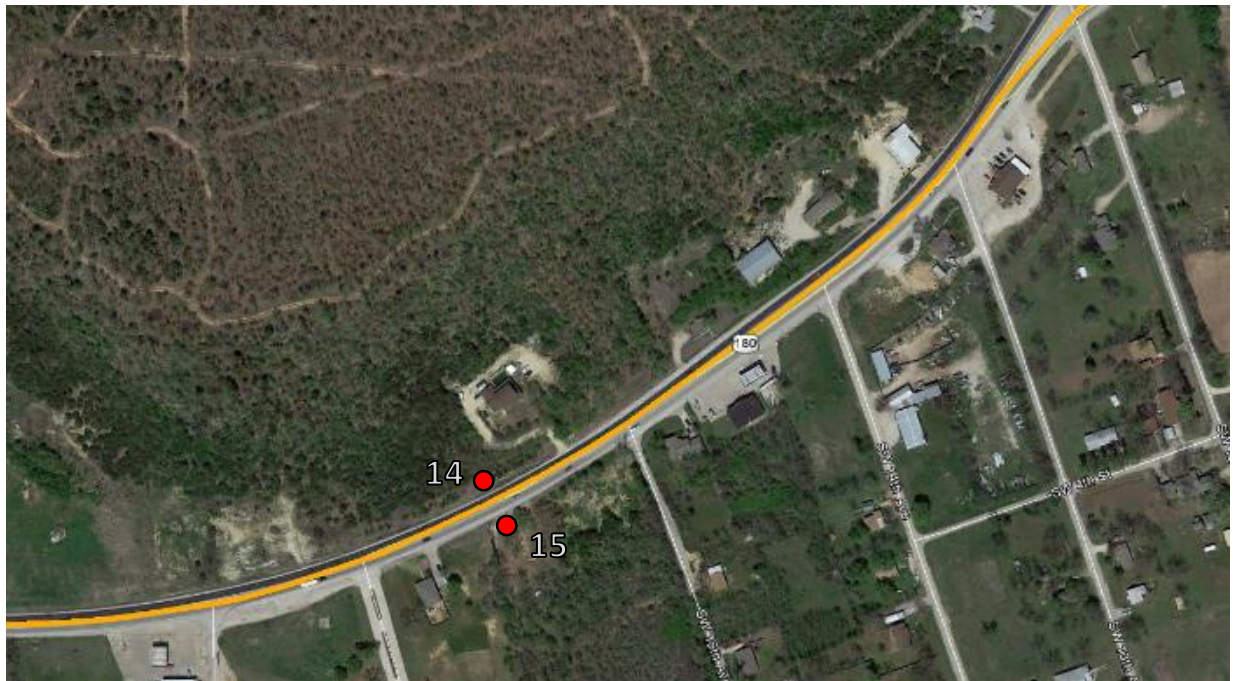
SIGN ID	SIGN TYPE	ROAD NAME	DIRECTION	ROAD JURISDICTION
13	To Auto Tour Route/Right Arrow	US 180	West	TxDOT ROW

## Enlarged Plan – Detail Map G

SCALE: 1:500

Bankhead Highway – Palo Pinto and vicinity, Palo Pinto County, Texas





Sources: Google Earth Map Layers, Imagery Date, 2014; Google Earth KMZ file of historic Bankhead Highway alignment provided by HHM, Inc.

### Legend

#### Category

— Bankhead Highway Route, ca. 1921

● <sup>1</sup> Signs

SIGN ID	SIGN TYPE	ROAD NAME	DIRECTION	ROAD JURISDICTION
14	Historic Route/Begin	US 180	West	TxDOT ROW
15	Historic Route/End	US 180	East	TxDOT ROW

## Enlarged Plan – Detail Map H

SCALE: 1:500

Bankhead Highway – Palo Pinto and vicinity, Palo Pinto County, Texas



**HISTORIC TEXAS HIGHWAYS  
SIGNAGE MANAGEMENT PLAN**

**ALL SIGNS IN PLAN**

<i>Map</i>	<i>Sign ID</i>	<i>Sign Type</i>	<i>Road Name</i>	<i>Direction</i>	<i>Nearest Intersection</i>	<i>Road Jurisdiction</i>	<i>Notes</i>
<i>A</i>	1	Historic Route/End	US 180	West	Ross Watson Rd	TxDOT ROW	
<i>A</i>	2	Historic Route/Begin To Auto Tour Route/Left Arrow	US 180	East	Ross Watson Rd	TxDOT ROW	
<i>A</i>	3	To Auto Tour Route/Right Arrow	US 180	West	Ross Watson Rd	TxDOT ROW	
<i>B</i>	4	To Auto Tour Route/Left Arrow	US 180	West	RD Bell Rd	TxDOT ROW	
<i>B</i>	5	To Auto Tour Route/Right Arrow	US 180	East	RD Bell Rd	TxDOT ROW	
<i>C</i>	6	To Auto Tour Route/Left Arrow	US 180	East	Oak St	TxDOT ROW	
<i>C</i>	7	To Auto Tour Route/Right Arrow	US 180	West	Oak St	TxDOT ROW	
<i>D</i>	8	To Auto Tour Route/Right Arrow	US 180	East	Oak St	TxDOT ROW	
<i>D</i>	9	To Auto Tour Route/Left Arrow	US 180	West	Oak St	TxDOT ROW	
<i>E</i>	10	To Auto Tour Route/Left Arrow	US 180	East	W. Bankhead Hwy	TxDOT ROW	
<i>E</i>	11	To Auto Tour Route/Right Arrow	US 180	West	W. Bankhead Hwy	TxDOT ROW	
<i>F</i>	12	To Auto Tour Route/Left Arrow	US 180	East	E. Bankhead Hwy	TxDOT ROW	
<i>G</i>	13	To Auto Tour Route/Right Arrow	US 180	West	E. Bankhead Hwy	TxDOT ROW	
<i>H</i>	14	Historic Route/Begin	US 180	West	SW 1 <sup>st</sup> St	TxDOT ROW	
<i>H</i>	15	Historic Route/End	US 180	East	SW 1 <sup>st</sup> St	TxDOT ROW	

**HISTORIC TEXAS HIGHWAYS  
SIGNAGE MANAGEMENT PLAN**

**SIGNS SORTED BY COUNTY/STATE**

<i>County/ State</i>	<i>Sign ID</i>	<i>Sign Type</i>	<i>Road Name</i>	<i>Direction</i>	<i>Nearest Intersection</i>	<i>Road Jurisdiction</i>
<i>Palo Pinto, TX</i>	1	Historic Route/End	US 180	West	Ross Watson Rd	TxDOT ROW
	2	Historic Route/Begin To Auto Tour Route/Left Arrow	US 180	East	Ross Watson Rd	TxDOT ROW
	3	To Auto Tour Route/Right Arrow	US 180	West	Ross Watson Rd	TxDOT ROW
	4	To Auto Tour Route/Left Arrow	US 180	West	RD Bell Rd	TxDOT ROW
	5	To Auto Tour Route/Right Arrow	US 180	East	RD Bell Rd	TxDOT ROW
	6	To Auto Tour Route/Left Arrow	US 180	East	Oak St	TxDOT ROW
	7	To Auto Tour Route/Right Arrow	US 180	West	Oak St	TxDOT ROW
	8	To Auto Tour Route/Right Arrow	US 180	East	Oak St	TxDOT ROW
	9	To Auto Tour Route/Left Arrow	US 180	West	Oak St	TxDOT ROW
	10	To Auto Tour Route/Left Arrow	US 180	East	W. Bankhead Hwy	TxDOT ROW
	11	To Auto Tour Route/Right Arrow	US 180	West	W. Bankhead Hwy	TxDOT ROW
	12	To Auto Tour Route/Left Arrow	US 180	East	E. Bankhead Hwy	TxDOT ROW
	13	To Auto Tour Route/Right Arrow	US 180	West	E. Bankhead Hwy	TxDOT ROW
	14	Historic Route/Begin	US 180	West	SW 1 <sup>st</sup> St	TxDOT ROW
	15	Historic Route/End	US 180	East	SW 1 <sup>st</sup> St	TxDOT ROW

# HISTORIC TEXAS HIGHWAYS SIGNAGE MANAGEMENT PLAN

## SIGNS SORTED BY JURISDICTION

<i>Road Jurisdiction</i>	<i>Sign ID</i>	<i>Sign Type</i>	<i>Road Name</i>	<i>Direction</i>	<i>Nearest Intersection</i>
TxDOT	1	Historic Route/End	US 180	West	Ross Watson Rd
	2	Historic Route/Begin To Auto Tour Route/Left Arrow	US 180	East	Ross Watson Rd
	3	To Auto Tour Route/Right Arrow	US 180	West	Ross Watson Rd
	4	To Auto Tour Route/Left Arrow	US 180	West	RD Bell Rd
	5	To Auto Tour Route/Right Arrow	US 180	East	RD Bell Rd
	6	To Auto Tour Route/Left Arrow	US 180	East	Oak St
	7	To Auto Tour Route/Right Arrow	US 180	West	Oak St
	8	To Auto Tour Route/Right Arrow	US 180	East	Oak St
	9	To Auto Tour Route/Left Arrow	US 180	West	Oak St
	10	To Auto Tour Route/Left Arrow	US 180	East	W. Bankhead Hwy
	11	To Auto Tour Route/Right Arrow	US 180	West	W. Bankhead Hwy
	12	To Auto Tour Route/Left Arrow	US 180	East	E. Bankhead Hwy
	13	To Auto Tour Route/Right Arrow	US 180	West	E. Bankhead Hwy
	14	Historic Route/Begin	US 180	West	SW 1 <sup>st</sup> St
	15	Historic Route/End	US 180	East	SW 1 <sup>st</sup> St

## Historic Texas Highways Sign Standards

### General sign specifications – Route Identification signs

- Anodized aluminum substrate with High Intensity Type C retroreflective sheeting, per the TxDOT *Traffic Operations Manual Signs and Markings Manual*
- White text and 1" white border (with a 3" radius at each corner) on a brown background.
- Maximum 4" text height using Clearview font.
- Maximum sign dimensions, 48" width x 48" height
- Text limited to five lines or four lines and directional arrow.
- Holes pre-drilled per installer instructions

### Individual sign types

- Maximum 48" width x 48" height
- 1" white border, 3" radius at each corner
- Clearview font, typical
- 4" text height for all text
- Maximum five lines of text
- Maximum sign area is 16 square feet. Single post supports per the TxDOT *Traffic Operations Manual Signs and Markings Volume*.





Route Identification signage types based on this model.

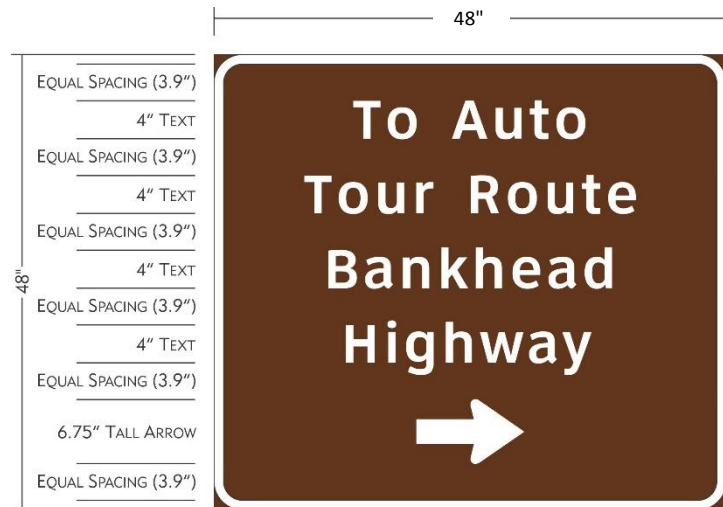
## Historic Texas Highways Sign Standards

### General sign specifications – Directional signs

- Anodized aluminum substrate with High Intensity Type C retroreflective sheeting, per the TxDOT *Traffic Operations Manual Signs and Markings Volume*
- White text and 1" white border (with a 3" radius at each corner) on a brown background.
- Maximum 4" text height using Clearview font.
- Maximum sign dimensions, 48" width x 48" height
- Text limited to five lines or four lines and directional arrow.
- Holes pre-drilled per installer instructions

### Individual sign types

- Maximum 48" width x 48" height
- 1" white border, 3" radius at each corner
- Clearview font, typical
- 4" text height for all text
- MUTCD arrow, M6-1, M6-2, or M6-3
- Maximum five lines of text
- Maximum sign area is 16 square feet. Single post supports per the TxDOT *Traffic Operations Manual Signs and Markings Volume*



Route Identification  
signage types based on  
this model.