

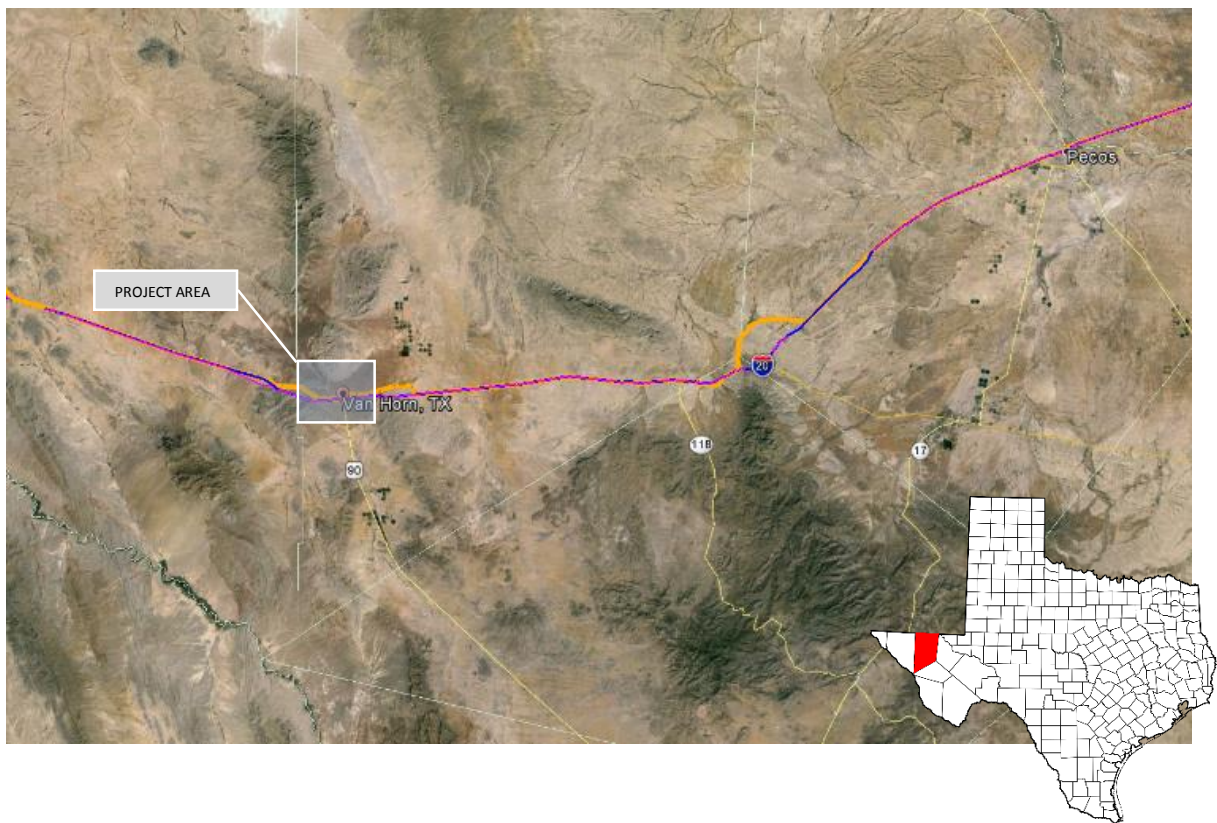
FINAL

INSTALLATION LOCATION:  
Go to "All Signs in Plan" page

## VAN HORN SIGN PLAN

**Historic Texas Highway(s):**  
Bankhead Highway

**Area of Interest (City, County, State):**  
Van Horn, Culberson County, Texas



**Prepared by:**

Partners: XYZ Historical Society  
City of Van Horn: A.B. Smith, Project Manager

**Contact Info:**

512-123-4567  
512-891-0123



**Prepared on:** September 30, 2015

FINAL

## Table of Contents

Overview Map

Map Sheet Reference Index

Road Sign Plan Map Series

Reports

    All Signs in Plan

    Signs Sorted by County/State

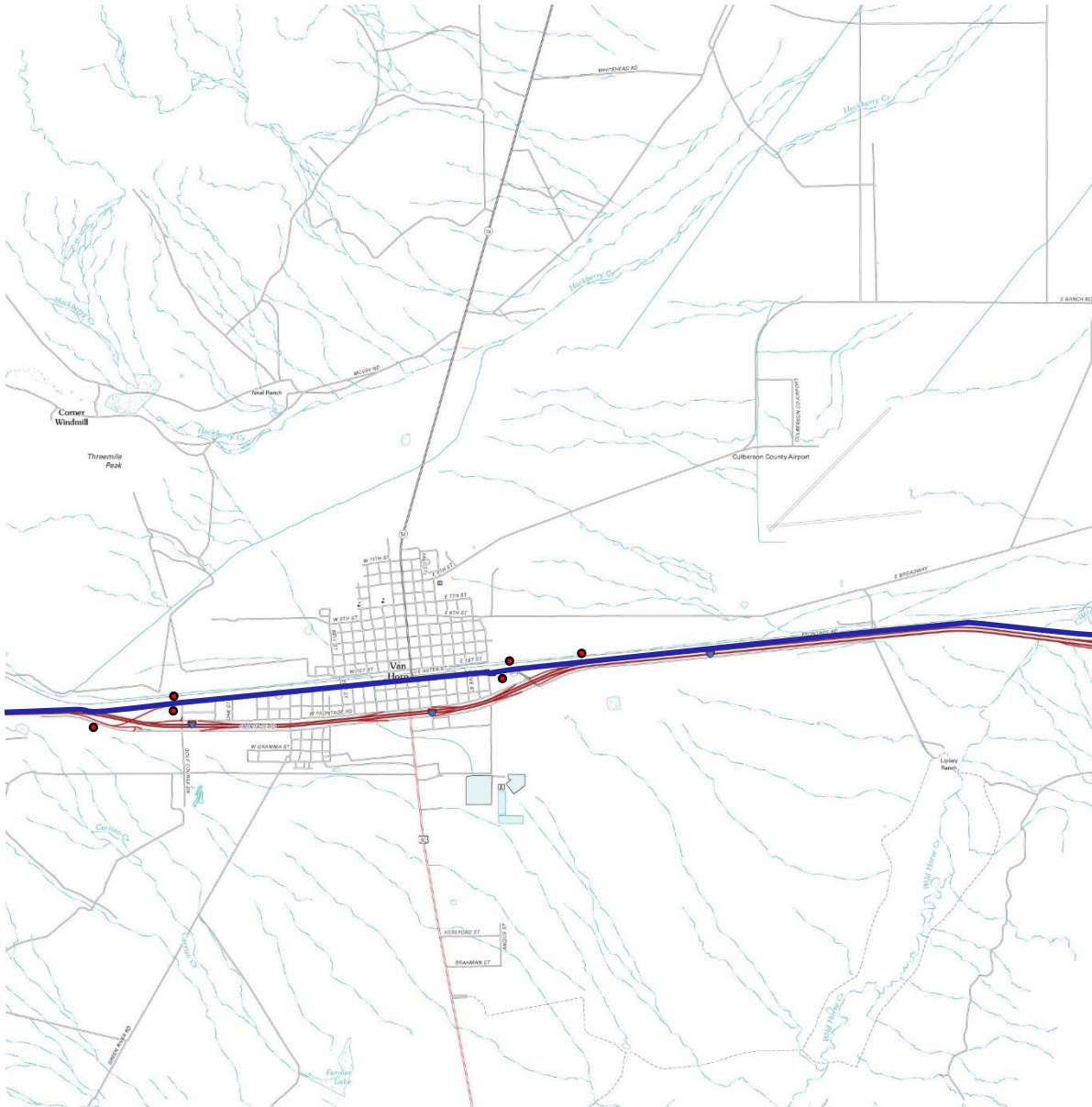
    Signs Sorted by Jurisdiction

Road Sign Plan Specification Sheets

## Van Horn Sign Plan Overview Map

**FINAL**

**INSTALLATION LOCATION:**  
Go to "All Signs in Plan" page



### Legend

#### Category

- Bankhead Highway Route, ca. 1936-1940
- Proposed Signage Locations

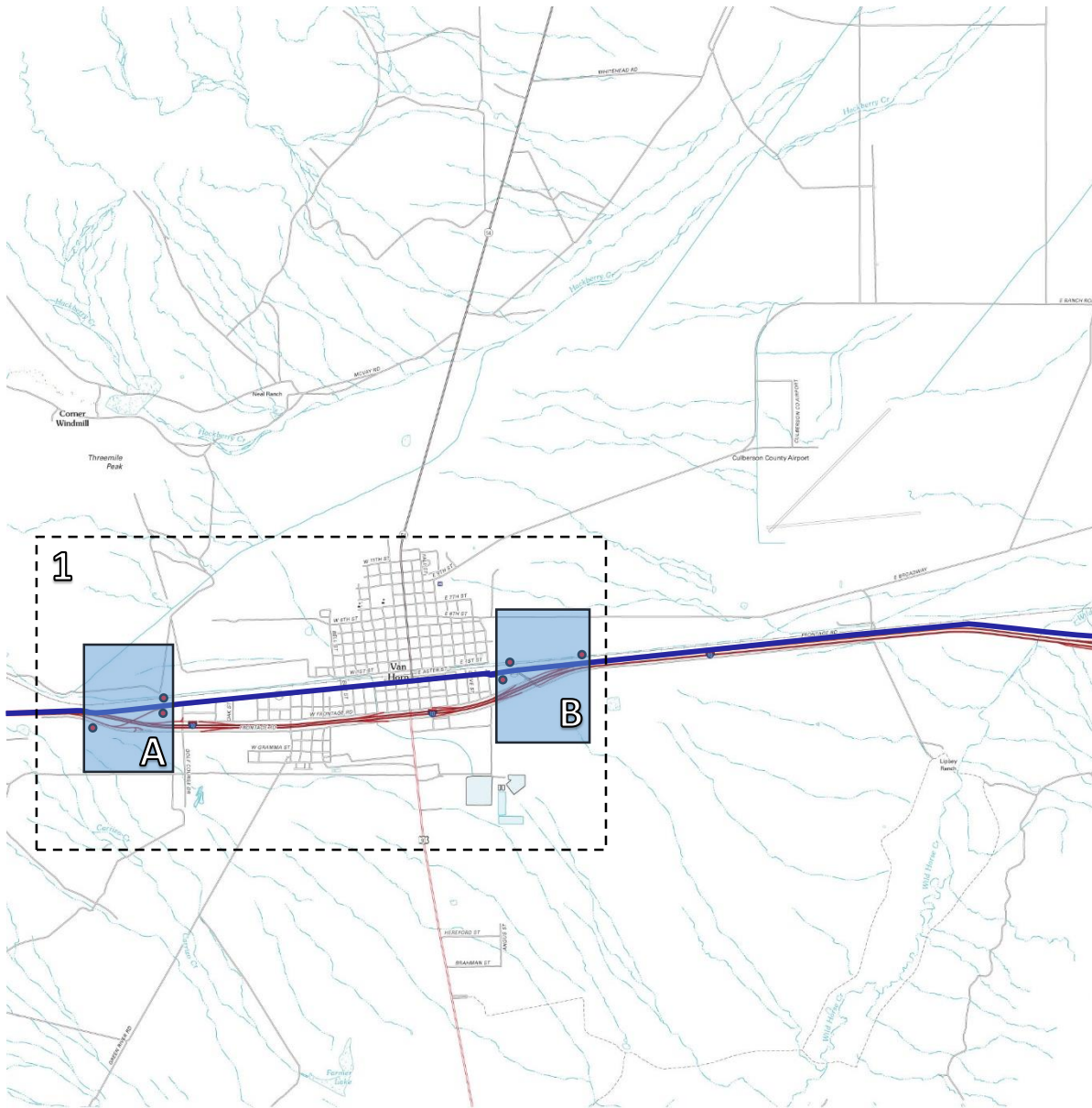


## Van Horn Sign Plan

# Map Sheet Index



**FINAL**

INSTALLATION LOCATION:  
Go to "All Signs in Plan" page



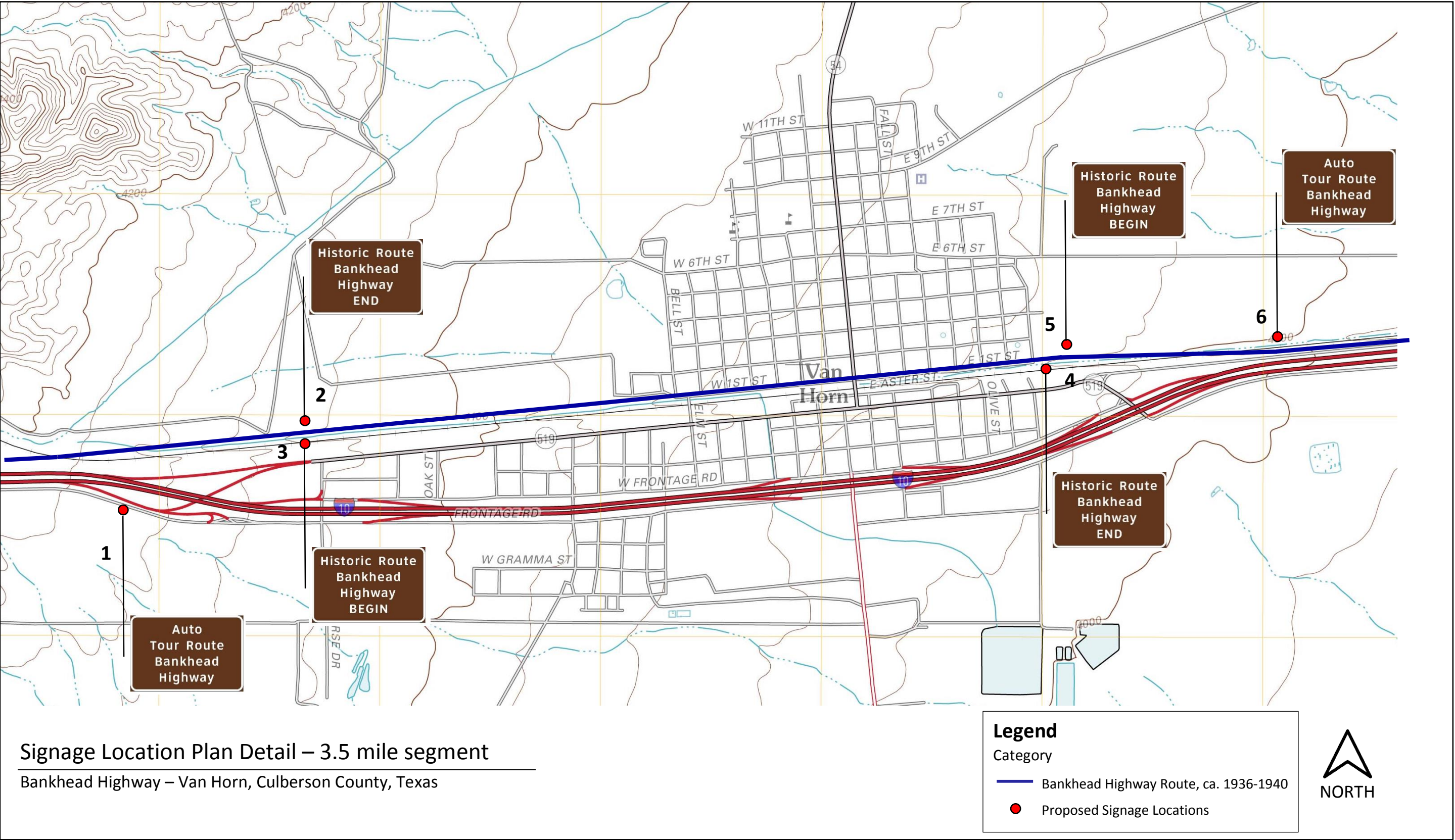
### Legend

#### Category

-  Bankhead Highway Route, ca. 1936-1940
-  Proposed Signage Locations







---


*This page intentionally left blank*




Sources: Google Earth Map Layers, Imagery Date, 2014; Google Earth KMZ file of historic Bankhead Highway alignment provided by HHM, Inc.

### Legend

#### Category

 Bankhead Highway Route, ca. 1936-1940

 Signs

SIGN ID	SIGN TYPE	ROAD NAME	DIRECTION	ROAD JURISDICTION
1	To Auto Tour Route/Left Arrow	US 90/IH 10 Business	East	TxDOT ROW
2	Historic Route/End	US 90/IH 10 Business	West	TxDOT ROW
3	Historic Route/Begin	US 90/IH 10 Business	East	TxDOT ROW

## Enlarged Plan – Detail Map A

SCALE: 1:1500

Bankhead Highway – Van Horn, Culberson County, Texas







Sources: Google Earth Map Layers, Imagery Date, 2014; Google Earth KMZ file of historic Bankhead Highway alignment provided by HHM, Inc.

### Legend

#### Category

— Bankhead Highway Route, ca. 1936-1940

1 Signs

SIGN ID	SIGN TYPE	ROAD NAME	DIRECTION	ROAD JURISDICTION
4	Historic Route/End	US 90/IH 10 Business	East	TxDOT ROW
5	Historic Route/Begin	US 90/IH 10 Business	West	TxDOT ROW
6	To Auto Tour Route/Up Arrow	US 90/IH 10 Business	West	TxDOT ROW

## Enlarged Plan – Detail Map B

SCALE: 1:1500

Bankhead Highway – Van Horn, Culberson County, Texas





# HISTORIC TEXAS HIGHWAYS SIGNAGE MANAGEMENT PLAN

ALL SIGNS IN PLAN

<i>Map</i>	<i>Sign ID</i>	<i>Sign Type</i>	<i>Road Name</i>	<i>Direction</i>	<i>Nearest Intersection</i>	<i>Road Jurisdiction</i>	<i>Notes</i>
<i>A</i>	1	To Auto Tour Route/Left Arrow	US 90/IH 10 Business	East	W. Broadway St.	TxDOT ROW	
<i>A</i>	2	Historic Route/End	US 90/IH 10 Business	West	Golf Course Dr.	TxDOT ROW	
<i>A</i>	3	Historic Route/Begin	US 90/IH 10 Business	East	Golf Course Dr.	TxDOT ROW	
<i>B</i>	4	Historic Route/End	US 90/IH 10 Business	East	Ross Dr.	TxDOT ROW	
<i>B</i>	5	Historic Route/Begin	US 90/IH 10 Business	West	Ross Dr.	TxDOT ROW	
<i>B</i>	6	To Auto Tour Route/Up Arrow	US 90/IH 10 Business	West	E. Broadway St.	TxDOT ROW	

**HISTORIC TEXAS HIGHWAYS  
SIGNAGE MANAGEMENT PLAN**

**SIGNS SORTED BY COUNTY/STATE**

<i>County/ State</i>	<i>Sign ID</i>	<i>Sign Type</i>	<i>Road Name</i>	<i>Direction</i>	<i>Nearest Intersection</i>	<i>Road Jurisdiction</i>
<i>Culberson, TX</i>	1	To Auto Tour Route/Left Arrow	US 90/IH 10 Business	East	W. Broadway St.	TxDOT ROW
	2	Historic Route/End	US 90/IH 10 Business	West	Golf Course Dr.	TxDOT ROW
	3	Historic Route/Begin	US 90/IH 10 Business	East	Golf Course Dr.	TxDOT ROW
	4	Historic Route/End	US 90/IH 10 Business	East	Ross Dr.	TxDOT ROW
	5	Historic Route/Begin	US 90/IH 10 Business	West	Ross Dr.	TxDOT ROW
	6	To Auto Tour Route/Up Arrow	US 90/IH 10 Business	West	E. Broadway St.	TxDOT ROW

# HISTORIC TEXAS HIGHWAYS SIGNAGE MANAGEMENT PLAN

## SIGNS SORTED BY JURISDICTION

<i>Road Jurisdiction</i>	<i>Sign ID</i>	<i>Sign Type</i>	<i>Road Name</i>	<i>Direction</i>	<i>Nearest Intersection</i>
<i>TxDOT</i>	1	To Auto Tour Route/Left Arrow	US 90/IH 10 Business	East	W. Broadway St.
	2	Historic Route/End	US 90/IH 10 Business	West	Golf Course Dr.
	3	Historic Route/Begin	US 90/IH 10 Business	East	Golf Course Dr.
	4	Historic Route/End	US 90/IH 10 Business	East	Ross Dr.
	5	Historic Route/Begin	US 90/IH 10 Business	West	Ross Dr.
	6	To Auto Tour Route/Up Arrow	US 90/IH 10 Business	West	E. Broadway St.



## Historic Texas Highways Sign Standards

### General sign specifications – Route Identification signs

- Anodized aluminum substrate with High Intensity Type C retroreflective sheeting, per the TxDOT *Traffic Operations Manual Signs and Markings Manual*
- White text and 1" white border (with a 3" radius at each corner) on a brown background.
- Minimum 4" text height using Clearview font.
- Maximum sign dimensions, 48" width x 48" height
- Text limited to five lines or four lines and directional arrow.
- Holes pre-drilled per installer instructions

### Individual sign types

- Maximum 48" width x 48" height
- 1" white border, 3" radius at each corner
- Clearview font, typical
- 4" text height for all text
- Maximum five lines of text
- Maximum sign area is 16 square feet. Single post supports per the TxDOT *Traffic Operations Manual Signs and Markings Volume*.





Route Identification signage types based on this model.

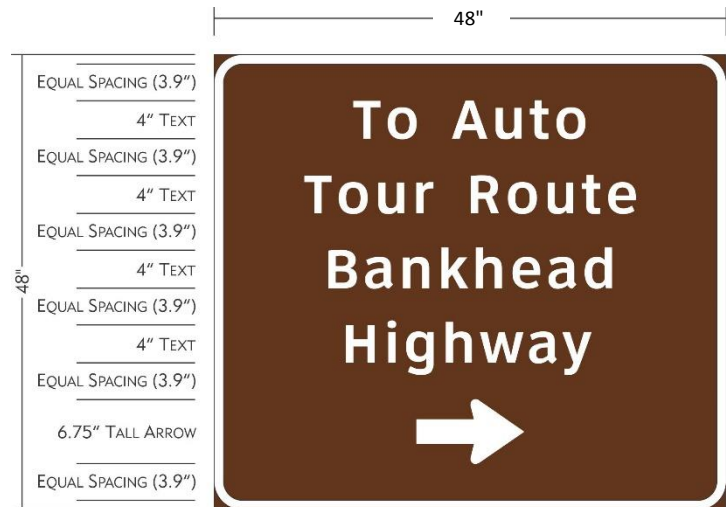
## Historic Texas Highways Sign Standards

### General sign specifications – Directional signs

- Anodized aluminum substrate with High Intensity Type C retroreflective sheeting, per the TxDOT *Traffic Operations Manual Signs and Markings Volume*
- White text and 1" white border (with a 3" radius at each corner) on a brown background.
- Maximum 4" text height using Clearview font.
- Maximum sign dimensions, 48" width x 48" height
- Text limited to five lines or four lines and directional arrow.
- Holes pre-drilled per installer instructions

### Individual sign types

- Maximum 48" width x 48" height
- 1" white border, 3" radius at each corner
- Clearview font, typical
- 4" text height for all text
- MUTCD arrow, M6-1, M6-2, or M6-3
- Maximum five lines of text
- Maximum sign area is 16 square feet. Single post supports per the TxDOT *Traffic Operations Manual Signs and Markings Volume*



Route Identification  
signage types based on  
this model.