

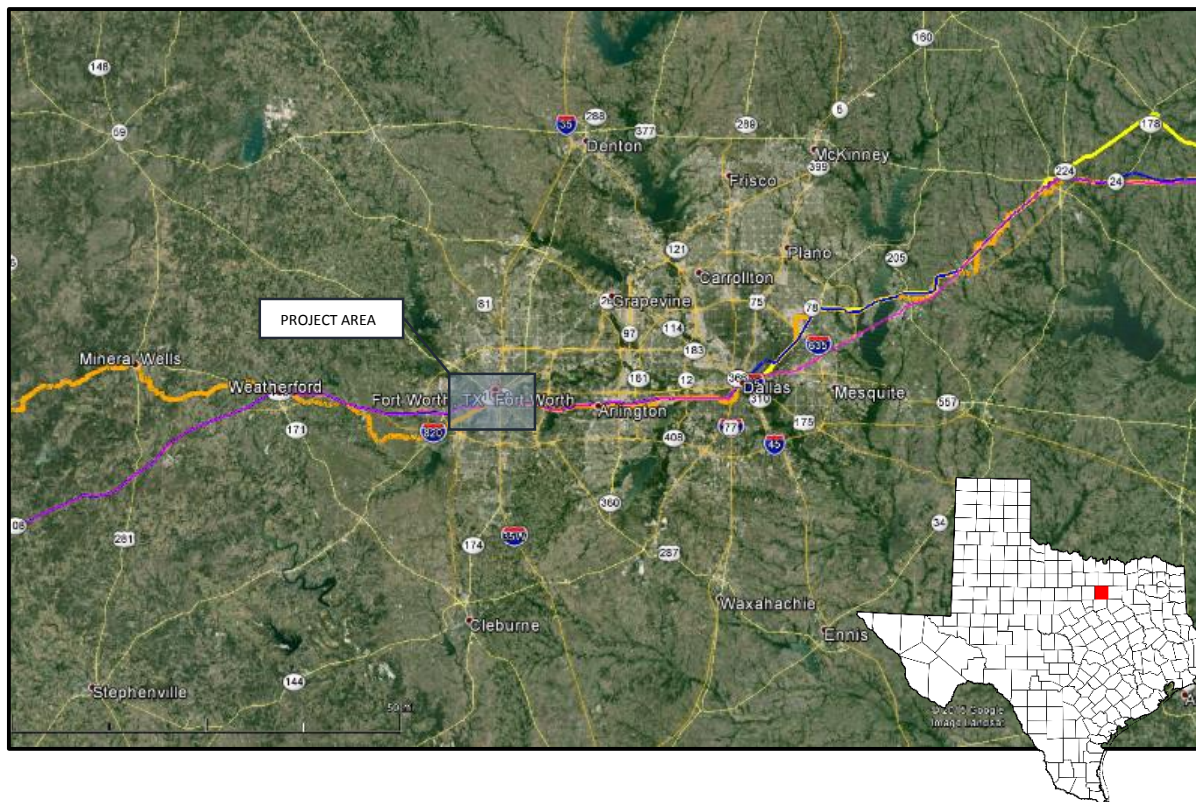
FINAL

INSTALLATION LOCATION:
Go to "All Signs in Plan" page

CITY OF FORT WORTH SIGN PLAN

Historic Texas Highway(s):
Bankhead Highway

Area of Interest (City, County, State):
Fort Worth, Tarrant County, Texas



Prepared by:

Partners: XYZ Historical Society
City of Fort Worth: A.B. Smith, Project Manager

Contact Info:

512-123-4567
512-891-0123



Prepared on: September 30, 2015

FINAL

Table of Contents

Overview Map

Map Sheet Reference Index

Road Sign Plan Map Series

Reports

 All Signs in Plan

 Signs Sorted by County/State

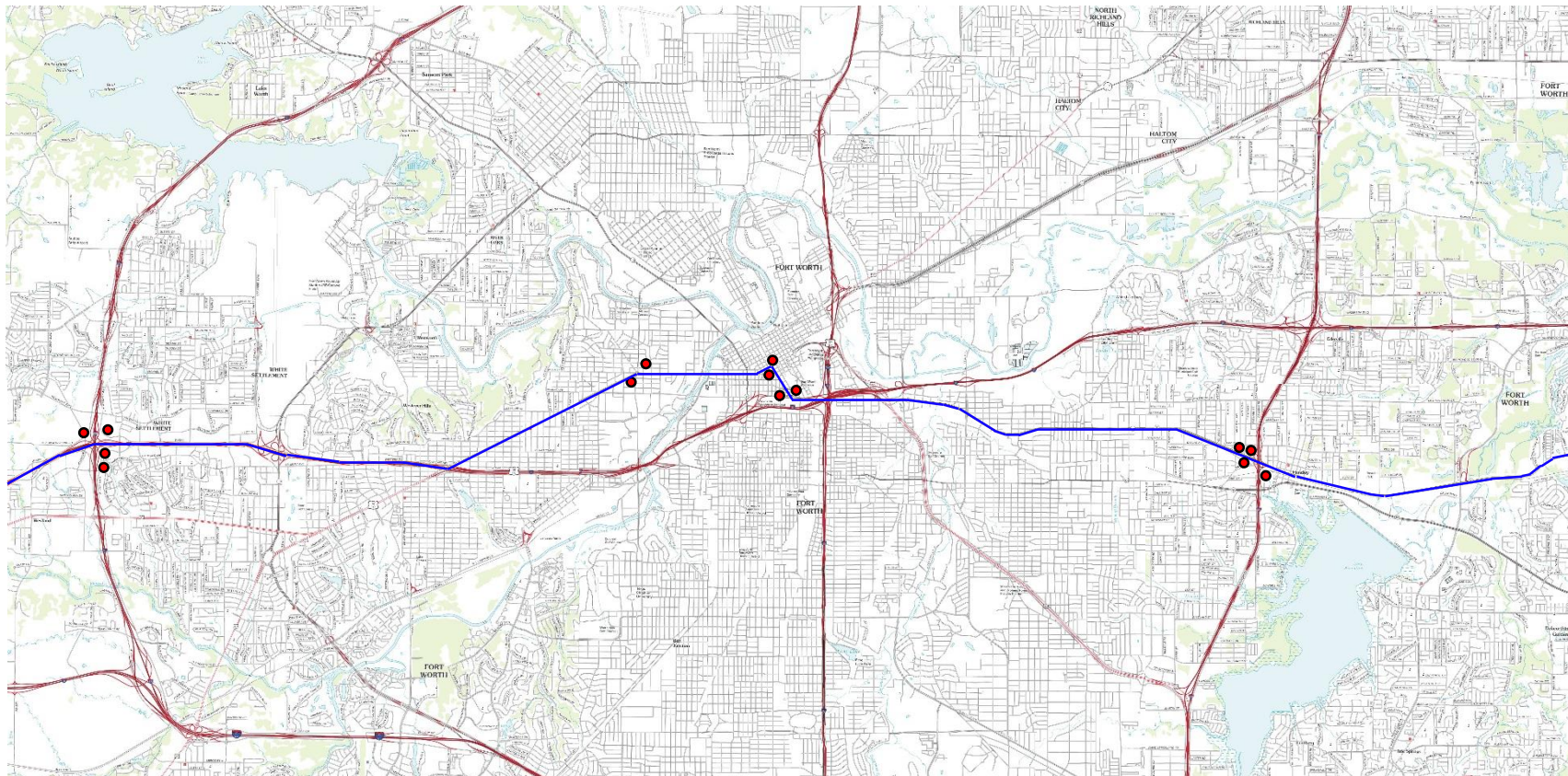
 Signs Sorted by Jurisdiction

Road Sign Plan Specification Sheets

City Of Fort Worth Sign Plan Overview Map


FINAL

INSTALLATION LOCATION:
Go to "All Signs in Plan" page



Legend

Category

 Bankhead Highway Route, ca. 1936-1940

 Proposed Signage Locations

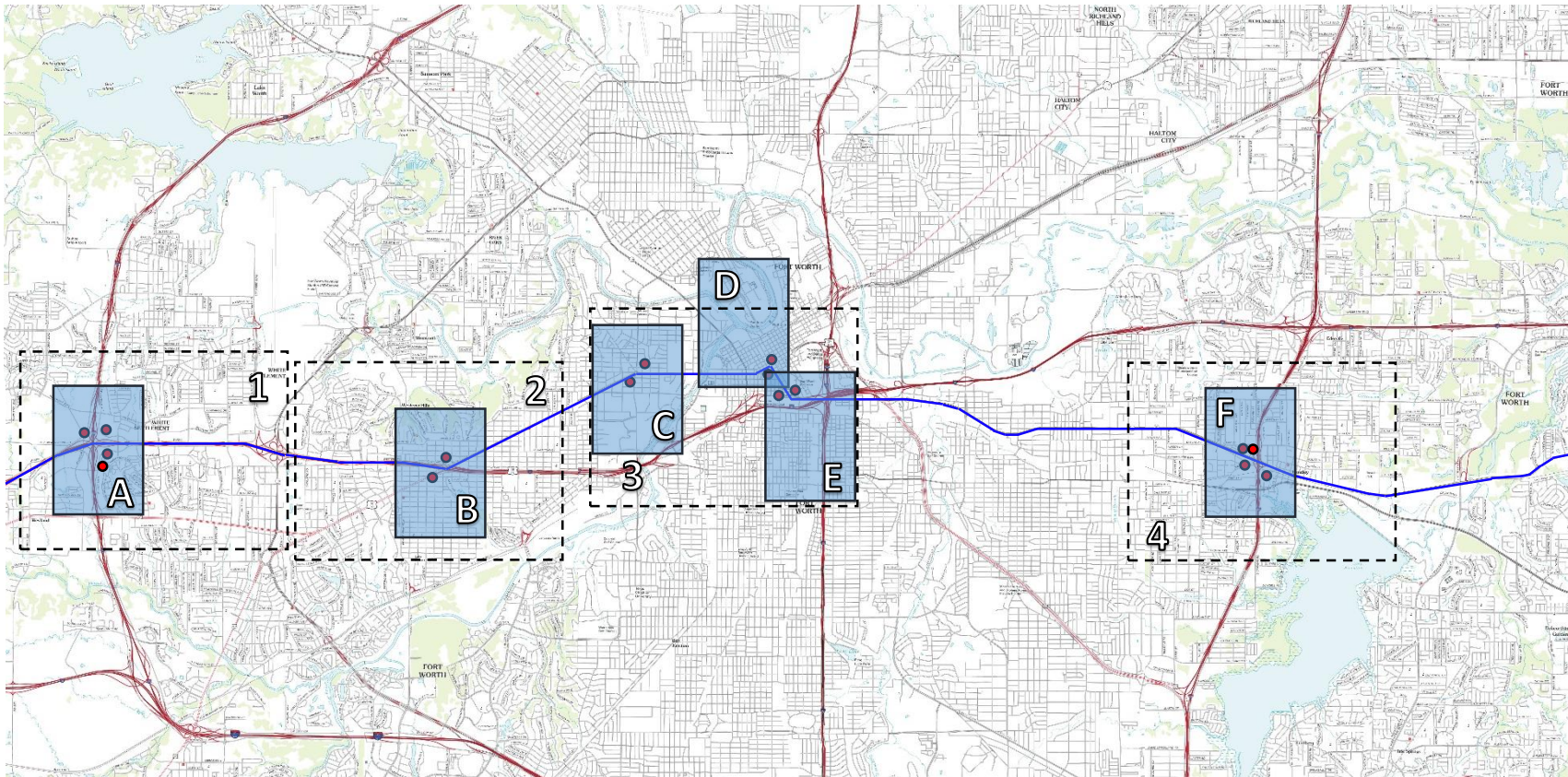


This page intentionally left blank

City Of Fort Worth Sign Plan Map Sheet Index

FINAL

INSTALLATION LOCATION:
Go to "All Signs in Plan" page



Legend

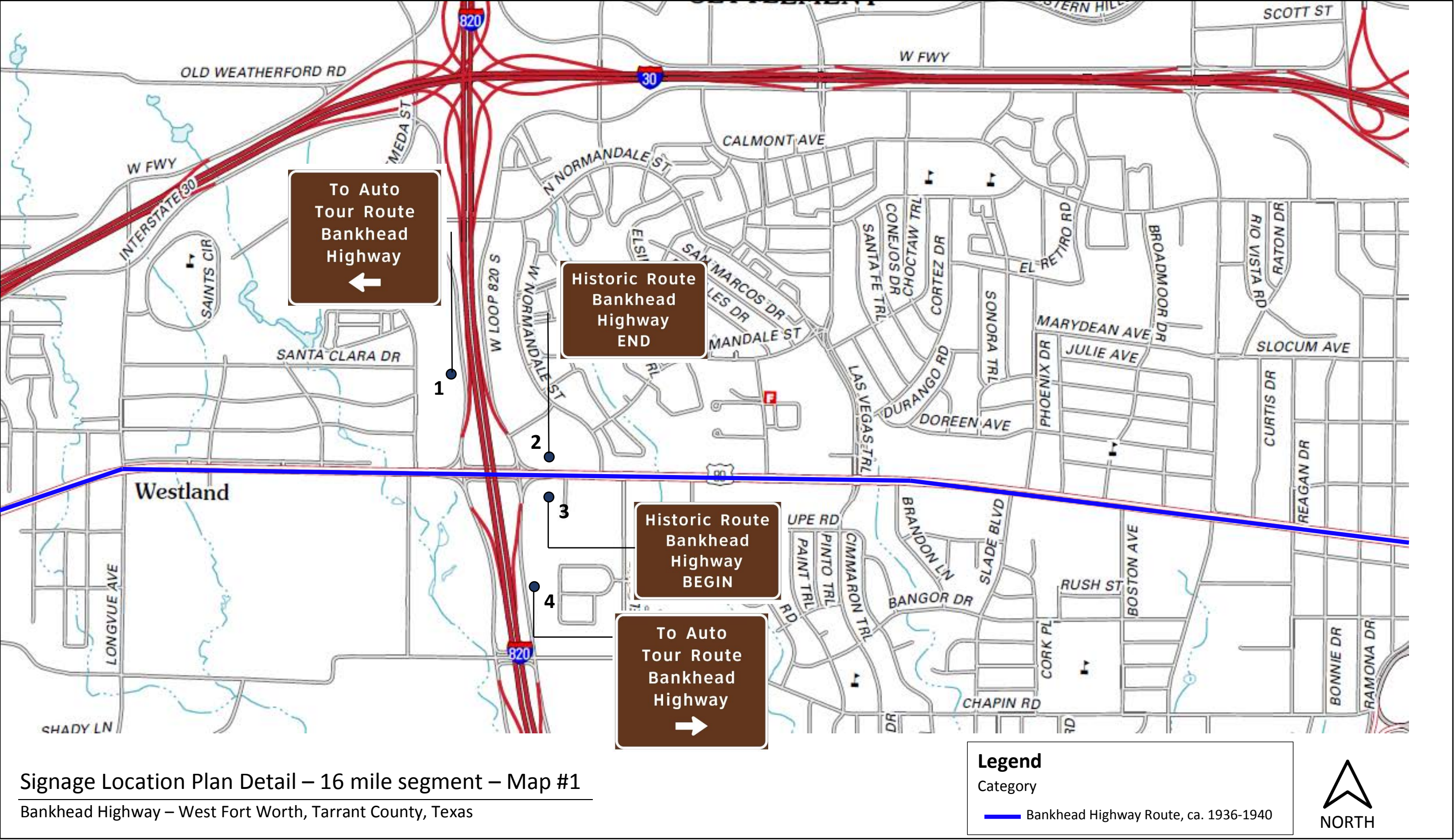
Category

 Bankhead Highway Route, ca. 1936-1940

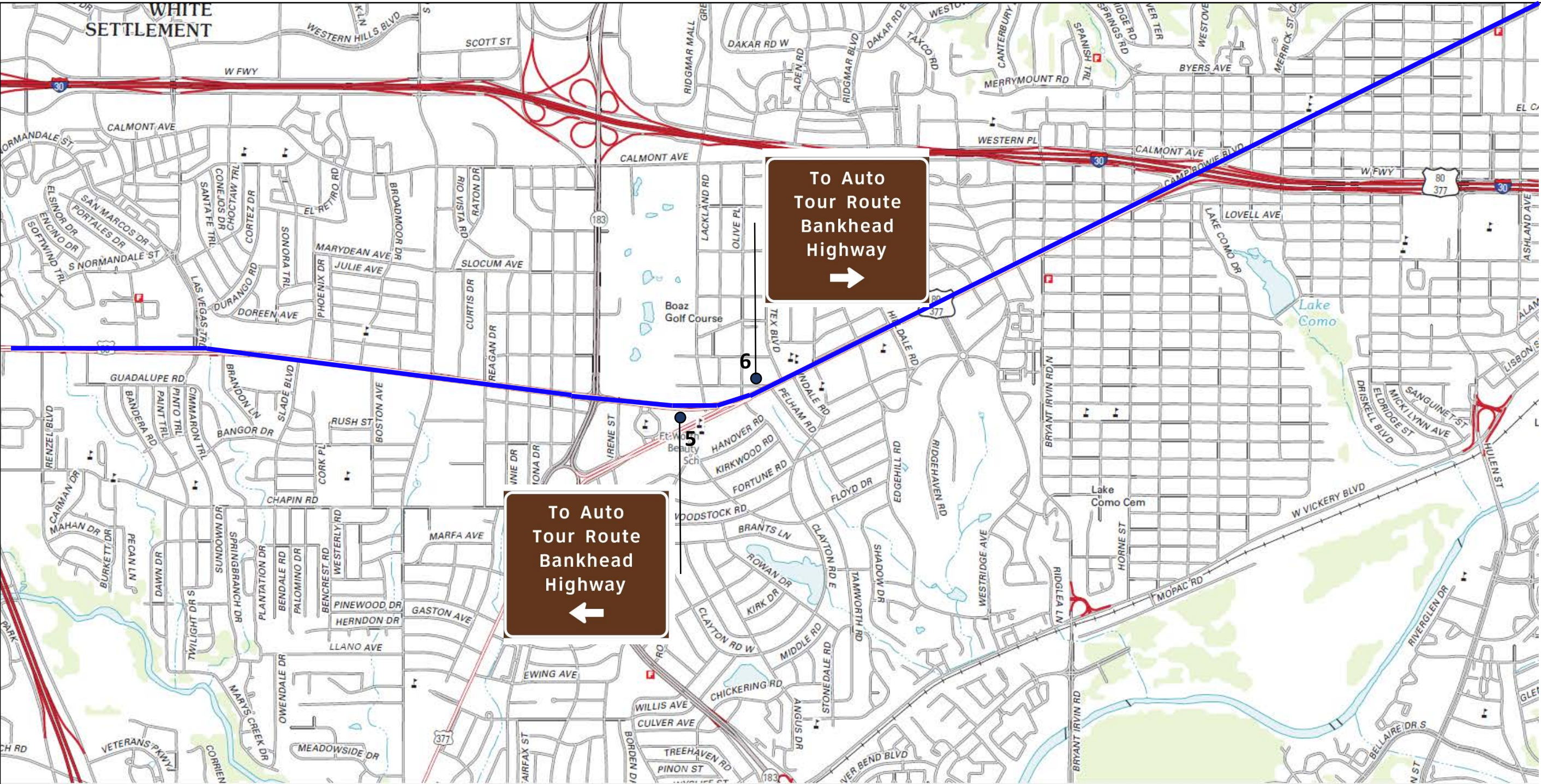
 Proposed Signage Locations



This page intentionally left blank



This page intentionally left blank



Signage Location Plan Detail – 16 mile segment – Map #2

Bankhead Highway – West Fort Worth, Tarrant County, Texas

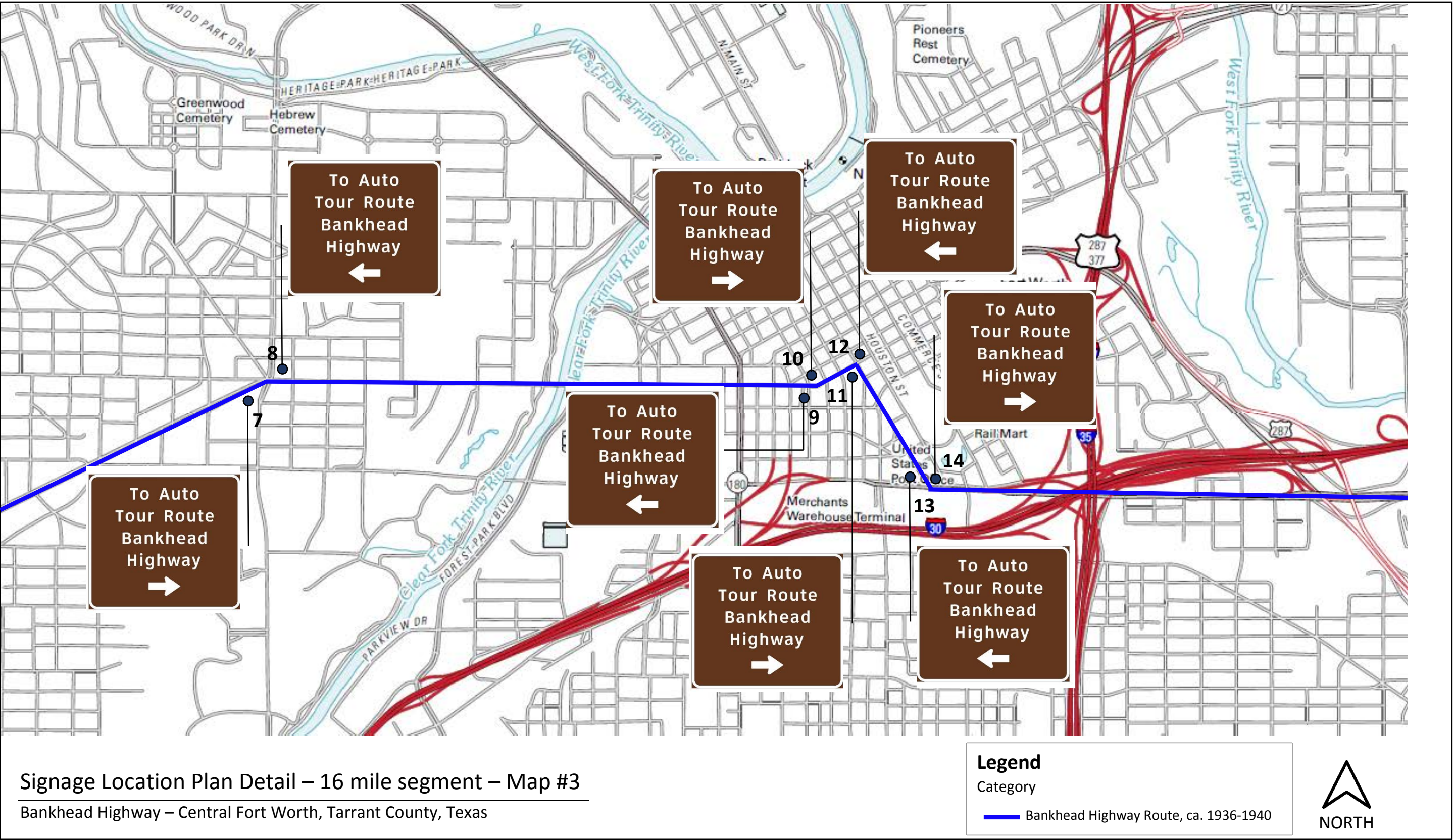
Legend

Category

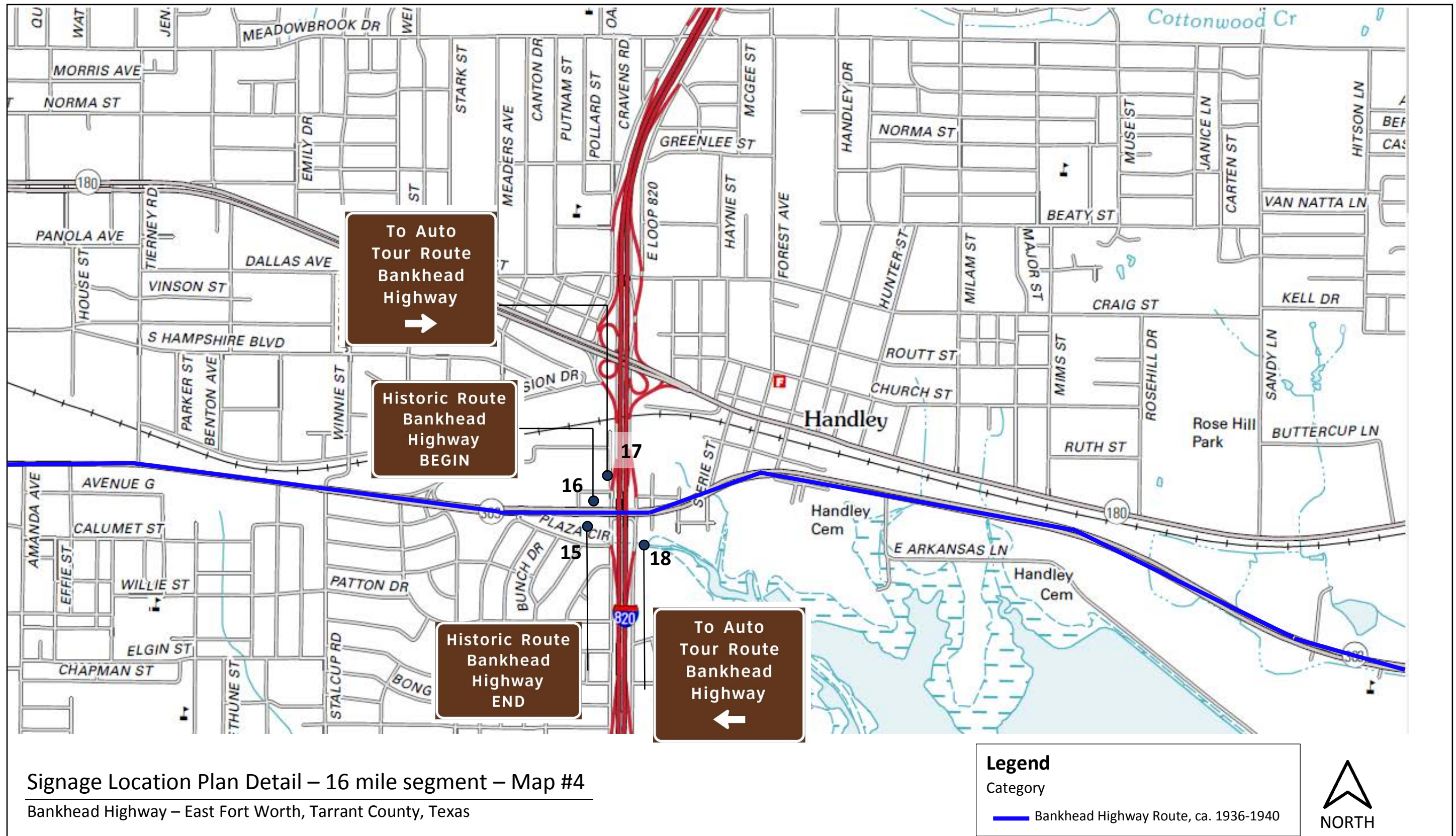
Bankhead Highway Route, ca. 1936-1940



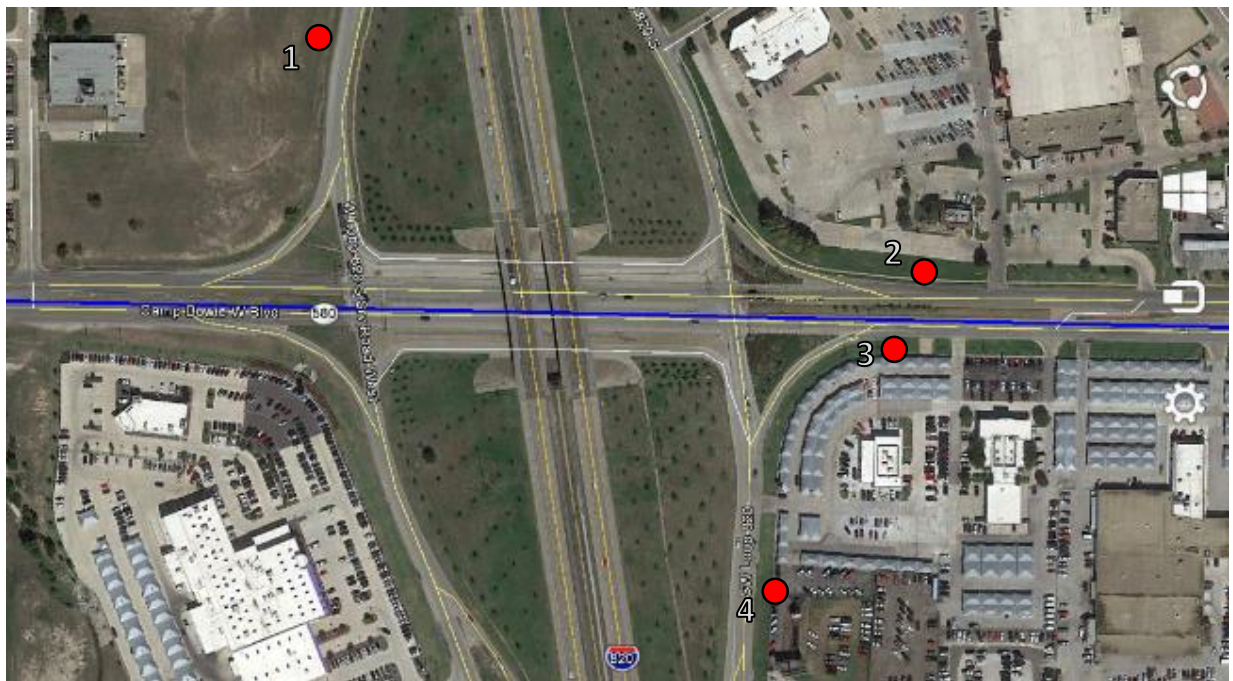
This page intentionally left blank



This page intentionally left blank




This page intentionally left blank




Sources: Google Earth Map Layers, Imagery Date, 2014; Google Earth KMZ file of historic Bankhead Highway alignment provided by HHM, Inc.

Legend

Category

 Bankhead Highway Route, ca. 1921

 Signs

SIGN ID	SIGN TYPE	ROAD NAME	DIRECTION	ROAD JURISDICTION
1	To Auto Tour Route/Left Arrow	Loop 820 Frontage Road - Southbound	South	TxDOT ROW
2	Historic Route/End	SH 580	West	TxDOT ROW
3	Historic Route/Begin	SH 580	East	TxDOT ROW
4	To Auto Tour Route/Right Arrow	Loop 820 Frontage Road - Northbound	North	TxDOT ROW

Enlarged Plan – Detail Map A

SCALE: 1:500

Bankhead Highway – West Fort Worth, Tarrant County, Texas





Sources: Google Earth Map Layers, Imagery Date, 2014; Google Earth KMZ file of historic Bankhead Highway alignment provided by HHM, Inc.

Legend

Category

- Bankhead Highway Route, ca. 1921
- ¹ Signs

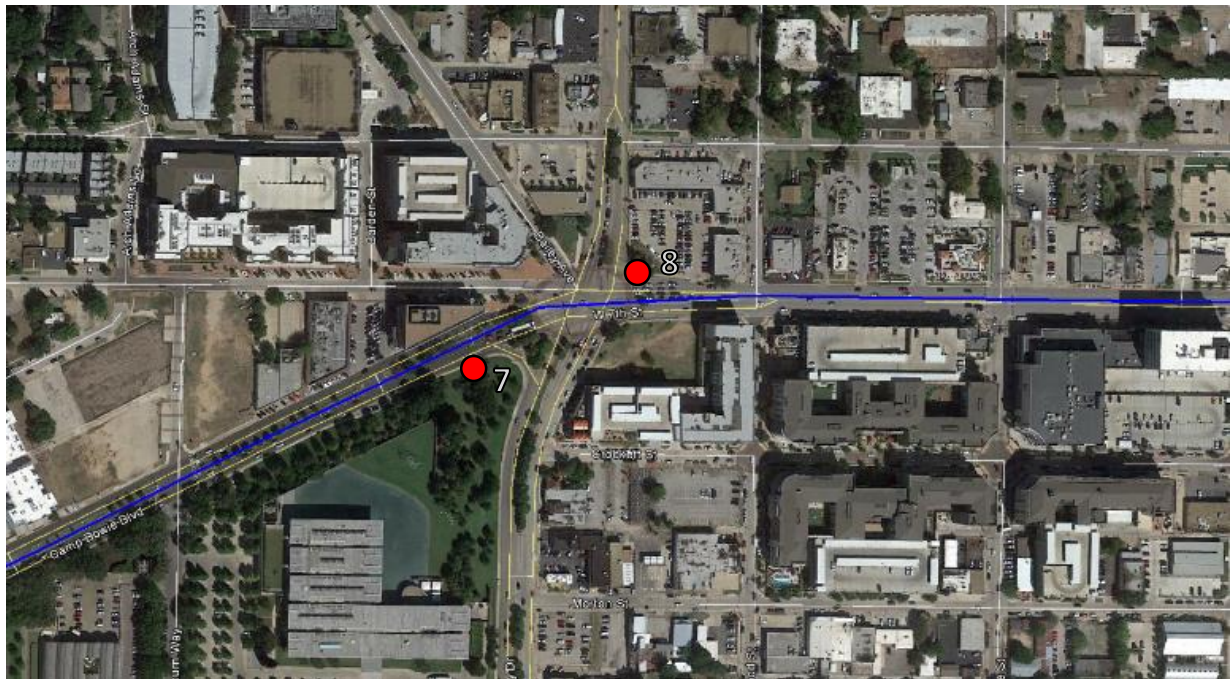
SIGN ID	SIGN TYPE	ROAD NAME	DIRECTION	ROAD JURISDICTION
5	To Auto Tour Route/Left Arrow	SH 580	East	TxDOT ROW
6	To Auto Tour Route/Right Arrow	SH 580/US 377	West	TxDOT ROW

Enlarged Plan – Detail Map B

SCALE: 1:500

Bankhead Highway – West Fort Worth, Tarrant County, Texas







Sources: Google Earth Map Layers, Imagery Date, 2014; Google Earth KMZ file of historic Bankhead Highway alignment provided by HHM, Inc.

Legend

Category

 Bankhead Highway Route, ca. 1921

 Signs

SIGN ID	SIGN TYPE	ROAD NAME	DIRECTION	ROAD JURISDICTION
7	To Auto Tour Route/Right Arrow	SH 580/US 377	East	TxDOT ROW
8	To Auto Tour Route/Left Arrow	SH 580/US 377	West	TxDOT ROW

Enlarged Plan – Detail Map C

SCALE: 1:500

Bankhead Highway – West Fort Worth, Tarrant County, Texas







Sources: Google Earth Map Layers, Imagery Date, 2014; Google Earth KMZ file of historic Bankhead Highway alignment provided by HHM, Inc.

Legend

Category

 Bankhead Highway Route, ca. 1921

 Signs

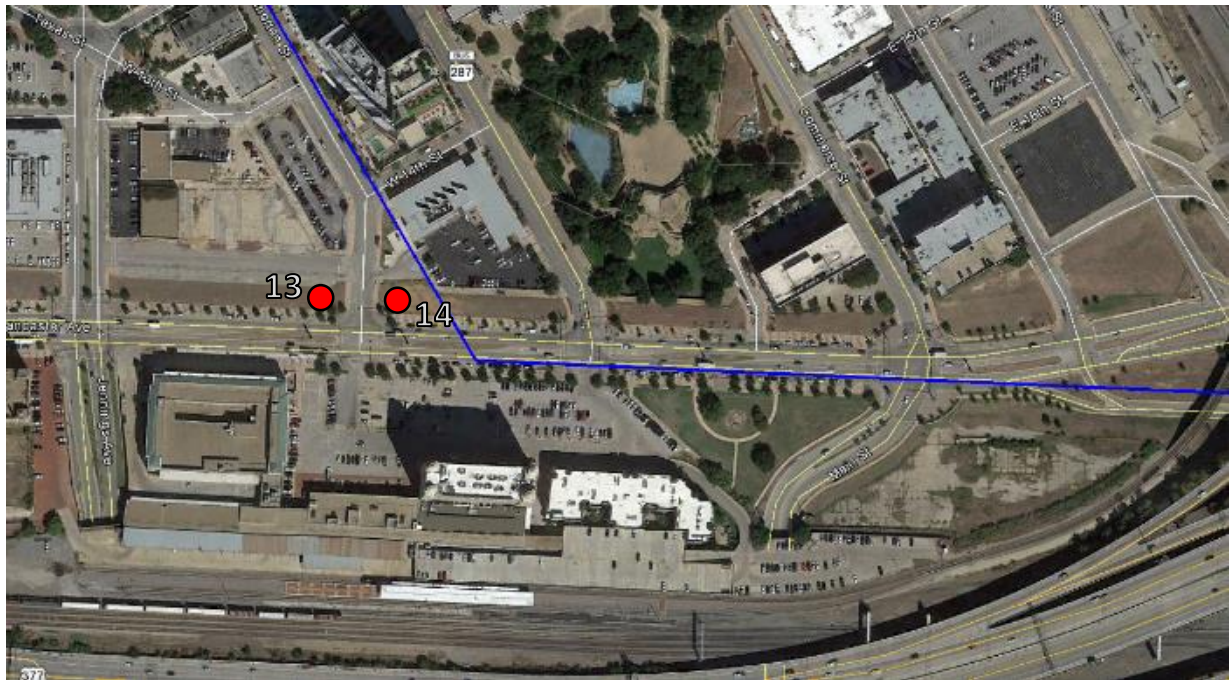
SIGN ID	SIGN TYPE	ROAD NAME	DIRECTION	ROAD JURISDICTION
9	To Auto Tour Route/Left Arrow	E. 7 th Street	East	TxDOT ROW
10	To Auto Tour Route/Right Arrow	E. 7 th Street	West	TxDOT ROW
11	To Auto Tour Route/Right Arrow	E. 7 th Street	East	TxDOT ROW
12	To Auto Tour Route/Left Arrow	E. 7 th Street	West	TxDOT ROW

Enlarged Plan – Detail Map D

SCALE: 1:500

Bankhead Highway – Central Fort Worth, Tarrant County, Texas





Sources: Google Earth Map Layers, Imagery Date, 2014; Google Earth KMZ file of historic Bankhead Highway alignment provided by HHM, Inc.

Legend

Category

— Bankhead Highway Route, ca. 1921

● ¹ Signs

SIGN ID	SIGN TYPE	ROAD NAME	DIRECTION	ROAD JURISDICTION
13	To Auto Tour Route/Left Arrow	SH 180	East	TxDOT ROW
14	To Auto Tour Route/Right Arrow	SH 180	West	TxDOT ROW

Enlarged Plan – Detail Map E

SCALE: 1:500

Bankhead Highway – Central Fort Worth, Tarrant County, Texas





Sources: Google Earth Map Layers, Imagery Date, 2014; Google Earth KMZ file of historic Bankhead Highway alignment provided by HHM, Inc.

Legend

Category

— Bankhead Highway Route, ca. 1921

● ¹ Signs

SIGN ID	SIGN TYPE	ROAD NAME	DIRECTION	ROAD JURISDICTION
15	Historic Route/End	SH 180	East	TxDOT ROW
16	Historic Route/Begin	SH 180	West	TxDOT ROW
17	To Auto Tour Route/Right Arrow	Loop 820	South	TxDOT ROW
18	To Auto Tour Route/Left Arrow	Loop 820	North	TxDOT ROW

Enlarged Plan – Detail Map F

SCALE: 1:500

Bankhead Highway – East Fort Worth, Tarrant County, Texas



NORTH

HISTORIC TEXAS HIGHWAYS SIGNAGE MANAGEMENT PLAN

ALL SIGNS IN PLAN

Map	Sign ID	Sign Type	Road Name	Direction	Nearest Intersection	Road Jurisdiction	Notes
A	1	To Auto Tour Route/Left Arrow	Loop 820 SB Frontage Road	South	SH 580	TxDOT ROW	
A	2	Historic Route/End	SH 580	West	Loop 820	TxDOT ROW	
A	3	Historic Route/Begin	SH 580	East	Loop 820	TxDOT ROW	
A	4	To Auto Tour Route/Right Arrow	IH 820 NB Frontage Road	North	SH 580	TxDOT ROW	
B	5	To Auto Tour Route/Left Arrow	SH 580	East	Lackland Road	TxDOT ROW	
B	6	To Auto Tour Route/Right Arrow	SH 580/ US 377	West	Olive Place	TxDOT ROW	
C	7	To Auto Tour Route/Right Arrow	SH 580/ US 377	East	University Drive	TxDOT ROW	
C	8	To Auto Tour Route/Left Arrow	SH 580/ US 377	West	University Drive	TxDOT ROW	
D	9	To Auto Tour Route/Left Arrow	E. 7 th Street	East	Lamar Street	TxDOT ROW	
D	10	To Auto Tour Route/Right Arrow	E. 7 th Street	West	Lamar Street	TxDOT ROW	
D	11	To Auto Tour Route/Right Arrow	E. 7 th Street	East	Throckmorton Street	TxDOT ROW	
D	12	To Auto Tour Route/Left Arrow	E. 7 th Street	West	Throckmorton Street	TxDOT ROW	
E	13	To Auto Tour Route/Left Arrow	SH 180	East	W. Lancaster Ave.	TxDOT ROW	
E	14	To Auto Tour Route/Right Arrow	SH 180	West	W. Lancaster Ave.	TxDOT ROW	
F	15	Historic Route/End	SH 180	East	Beach St. Service Road, South	TxDOT ROW	
F	16	Historic Route/Begin	SH 180	West	Beach St. Service Road, South	TxDOT ROW	
F	17	To Auto Tour Route/Right Arrow	Loop 820 SB Frontage Road	South	SH 180	TxDOT ROW	
F	18	To Auto Tour Route/Left Arrow	Loop 820 NB Frontage Road	North	SH 180	TxDOT ROW	

HISTORIC TEXAS HIGHWAYS SIGNAGE MANAGEMENT PLAN

SIGNS SORTED BY COUNTY/STATE

<i>County/ State</i>	<i>Sign ID</i>	<i>Sign Type</i>	<i>Road Name</i>	<i>Direction</i>	<i>Nearest Intersection</i>	<i>Road Jurisdiction</i>
<i>Tarrant, TX</i>	1	To Auto Tour Route/Left Arrow	Loop 820 SB Frontage Road	South	SH 580	TxDOT ROW
	2	Historic Route/End	SH 580	West	Loop 820	TxDOT ROW
	3	Historic Route/Begin	SH 580	East	Loop 820	TxDOT ROW
	4	To Auto Tour Route/Right Arrow	IH 820 NB Frontage Road	North	SH 580	TxDOT ROW
	5	To Auto Tour Route/Left Arrow	SH 580	East	Lackland Road	TxDOT ROW
	6	To Auto Tour Route/Right Arrow	SH 580/ US 377	West	Olive Place	TxDOT ROW
	7	To Auto Tour Route/Right Arrow	SH 580/ US 377	East	University Drive	TxDOT ROW
	8	To Auto Tour Route/Left Arrow	SH 580/ US 377	West	University Drive	TxDOT ROW
	9	To Auto Tour Route/Left Arrow	E. 7 th Street	East	Lamar Street	TxDOT ROW
	10	To Auto Tour Route/Right Arrow	E. 7 th Street	West	Lamar Street	TxDOT ROW
	11	To Auto Tour Route/Right Arrow	E. 7 th Street	East	Throckmorton Street	TxDOT ROW
	12	To Auto Tour Route/Left Arrow	E. 7 th Street	West	Throckmorton Street	TxDOT ROW
	13	To Auto Tour Route/Left Arrow	SH 180	East	W. Lancaster Ave.	TxDOT ROW
	14	To Auto Tour Route/Right Arrow	SH 180	West	W. Lancaster Ave.	TxDOT ROW
	15	Historic Route/End	SH 180	East	Beach St. Service Road, South	TxDOT ROW
	16	Historic Route/Begin	SH 180	West	Beach St. Service Road, South	TxDOT ROW
	17	To Auto Tour Route/Right Arrow	Loop 820 SB Frontage Road	South	SH 180	TxDOT ROW
	18	To Auto Tour Route/Left Arrow	Loop 820 NB Frontage Road	North	SH 180	TxDOT ROW

HISTORIC TEXAS HIGHWAYS SIGNAGE MANAGEMENT PLAN

SIGNS SORTED BY JURISDICTION

<i>Road Jurisdiction</i>	<i>Sign ID</i>	<i>Sign Type</i>	<i>Road Name</i>	<i>Direction</i>	<i>Nearest Intersection</i>
TxDOT	1	To Auto Tour Route/Left Arrow	Loop 820 SB Frontage Road	South	SH 580
	2	Historic Route/End	SH 580	West	Loop 820
	3	Historic Route/Begin	SH 580	East	Loop 820
	4	To Auto Tour Route/Right Arrow	IH 820 NB Frontage Road	North	SH 580
	5	To Auto Tour Route/Left Arrow	SH 580	East	Lackland Road
	6	To Auto Tour Route/Right Arrow	SH 580/ US 377	West	Olive Place
	7	To Auto Tour Route/Right Arrow	SH 580/ US 377	East	University Drive
	8	To Auto Tour Route/Left Arrow	SH 580/ US 377	West	University Drive
	9	To Auto Tour Route/Left Arrow	E. 7 th Street	East	Lamar Street
	10	To Auto Tour Route/Right Arrow	E. 7 th Street	West	Lamar Street
	11	To Auto Tour Route/Right Arrow	E. 7 th Street	East	Throckmorton Street
	12	To Auto Tour Route/Left Arrow	E. 7 th Street	West	Throckmorton Street
	13	To Auto Tour Route/Left Arrow	SH 180	East	W. Lancaster Ave.
	14	To Auto Tour Route/Right Arrow	SH 180	West	W. Lancaster Ave.
	15	Historic Route/End	SH 180	East	Beach St. Service Road, South
	16	Historic Route/Begin	SH 180	West	Beach St. Service Road, South
	17	To Auto Tour Route/Right Arrow	Loop 820 SB Frontage Road	South	SH 180
	18	To Auto Tour Route/Left Arrow	Loop 820 NB Frontage Road	North	SH 180

Historic Texas Highways Sign Standards

General sign specifications – Route Identification signs

- Anodized aluminum substrate with High Intensity Type C retroreflective sheeting, per the TxDOT *Traffic Operations Manual Signs and Markings Manual*
- White text and 1" white border (with a 3" radius at each corner) on a brown background.
- Maximum 4" text height using Clearview font.
- Maximum sign dimensions, 48" width x 48" height
- Text limited to five lines or four lines and directional arrow.
- Holes pre-drilled per installer instructions

Individual sign types

- Maximum 48" width x 48" height
- 1" white border, 3" radius at each corner
- Clearview font, typical
- 4" text height for all text
- Maximum five lines of text
- Maximum sign area is 16 square feet. Single post supports per the TxDOT *Traffic Operations Manual Signs and Markings Volume*.





Route Identification signage types based on this model.

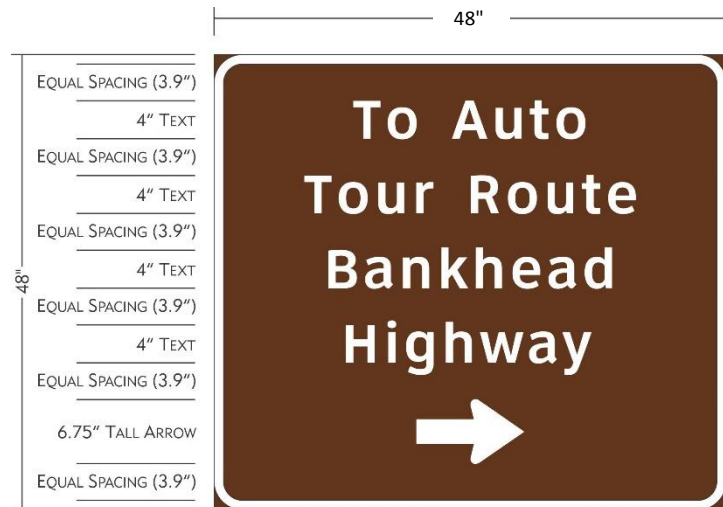
Historic Texas Highways Sign Standards

General sign specifications – Directional signs

- Anodized aluminum substrate with High Intensity Type C retroreflective sheeting, per the TxDOT *Traffic Operations Manual Signs and Markings Volume*
- White text and 1" white border (with a 3" radius at each corner) on a brown background.
- Maximum 4" text height using Clearview font.
- Maximum sign dimensions, 48" width x 48" height
- Text limited to five lines or four lines and directional arrow.
- Holes pre-drilled per installer instructions

Individual sign types

- Maximum 48" width x 48" height
- 1" white border, 3" radius at each corner
- Clearview font, typical
- 4" text height for all text
- MUTCD arrow, M6-1, M6-2, or M6-3
- Maximum five lines of text
- Maximum sign area is 16 square feet. Single post supports per the TxDOT *Traffic Operations Manual Signs and Markings Volume*



Route Identification
signage types based on
this model.