

Incorporating Transportation History into Exhibits

Welcome!

The webinar will begin at 2:00 p.m. CT



TEXAS HISTORICAL COMMISSION



REAL PLACES TELLING REAL STORIES



THC Museum Services

- The Museum Services Program provides support, resources, and training to museums in Texas.
 - *Consultations*
 - *Webinars and workshops*
 - *Resources*



THC Museum Services

www.thc.texas.gov/museum-services

- On our webpage:
 - *Webinars*
 - *Workshops*
 - *Grants and Fundraising*
 - *Helpful Resources*
 - *Connect and Learn*



THC Museum Services

- **Laura Casey**
Museum Services Program Coordinator
laura.casey@thc.texas.gov
512-463-6427
- **Emily Hermans**
Museum Services Program Specialist
emily.hermans@thc.texas.gov
512-463-5921



Real Places Conference 2020

- January 29-31, 2020 in Austin
- Keynote: Elizabeth Merritt, Center for the Future of Museums
- Museum-focused sessions include:
 - *Minimizing Impact on Visitors and Staff During Construction Projects*
 - *Fund Development and Successful Storytelling*
 - *Math & History Programming*
 - *Podcasting*
 - *Programs and Exhibits in Response to Current Events*
- Register at www.realplaces.us



Upcoming Free Webinars

- **Neurodiversity in Museums: Crafting Community for Children with Autism Spectrum Disorder**
 - *Wednesday, January 15, 2:00 p.m. CT*
- **Museum Relevance: Exhibitions for Social Justice**
 - *Thursday, January 23, 10:00 a.m. CT*



Kate Betz and Rebekah Dobrasko





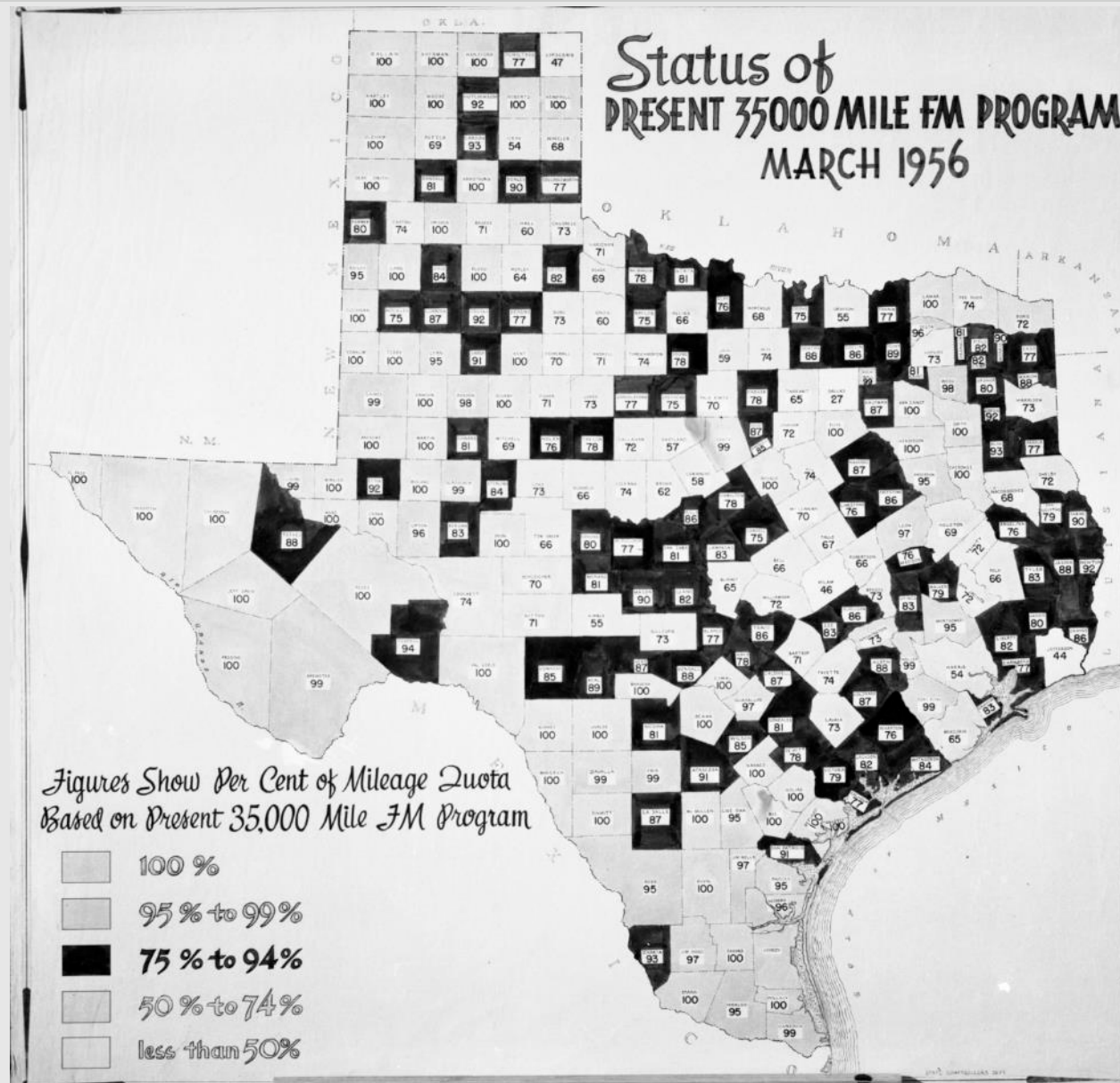


Incorporating Transportation History into Exhibits

Rebekah Dobrasko,
Texas Department of Transportation
Kate Betz,
Bullock Texas State History Museum









- TxDOT historians, archeologists, biologists, geologists, etc.
- Run a variety of programs:
 - Beyond The Road Campaign
 - Archeology and History
 - Texas Historic Bridges
 - Stormwater Programs
 - Ozone Action Days
 - Wetland Mitigation Banks
 - Drive Clean Texas



What the Bullock Museum is....and what it isn't



- Digital

- Websites
- Maps
- Photographs
- Historic contexts
- Road plans

- Paper Files

- Bridges
- Roadside parks
- Depression-era roads and bridges
- Works Progress Administration Records





www.txdot.gov

The screenshot shows the TxDOT website homepage. At the top is a dark blue header with the TxDOT logo on the left, the text "TEXAS DEPARTMENT OF TRANSPORTATION" in the center, and a search bar on the right. Below the header is a navigation menu with links: "Driver", "Government", "Business", "Inside TxDOT", and "Careers". The main content area features a large banner image of a flooded road. Overlaid on the left side of the banner is a dark blue box with the text "Turn Around, Don't Drown." and a "Read more >" link. Below the banner are four white boxes, each representing a different section of the website: "Driver" (with a photo of a woman driving), "Government" (with a photo of a man and a large star), "Business" (with a photo of a woman smiling), and "Careers" (with a photo of people in a meeting). Each box contains a brief description of the resources available in that section.

TEXAS DEPARTMENT OF TRANSPORTATION

A - Z Site Index | Contact Us | Español

Search TxDOT

Driver | Government | Business | Inside TxDOT | Careers

Turn Around, Don't Drown.

Read more >

Driver

Learn more about Texas [travel](#), [driving laws](#) and [highway safety](#).

Government

Research studies and laws and learn how we work with communities.

Business

Learn about TxDOT [business resources](#) and the [bidding process](#).

Careers

We're more than a job. At TxDOT, you can build a career.



TxDOT Texas Highway Designation Files Search

Highway Designation Files provide a description of proposed changes to the state highway system. A “designation” is the unique combination of a route’s name and its intended path. Proposed changes include new designations and any changes to existing designations. Such changes are approved by the [Texas Transportation Commission](#) and are officially documented on Minute Orders, which can be found [here](#). Highway Designation Files use language from the Minute Orders to provide a brief overview of the proposed changes. To learn more about the designation process, click [here](#).

It is important to emphasize that Minute Orders and the resulting Highway Designation Files describe proposed changes. They do not necessarily describe current, on-the-ground conditions.

Enter your query below:

If you cannot find your highway by Type of Route and Route Number, try searching by Route Number only. The search results will include all routes with that number.

For questions or comments about the Texas Highway Designation Files, please contact us by phone at (512) 486-5000 or [e-mail us](#).

Search for:

Type of Route:

Select a Route...



Route Number:

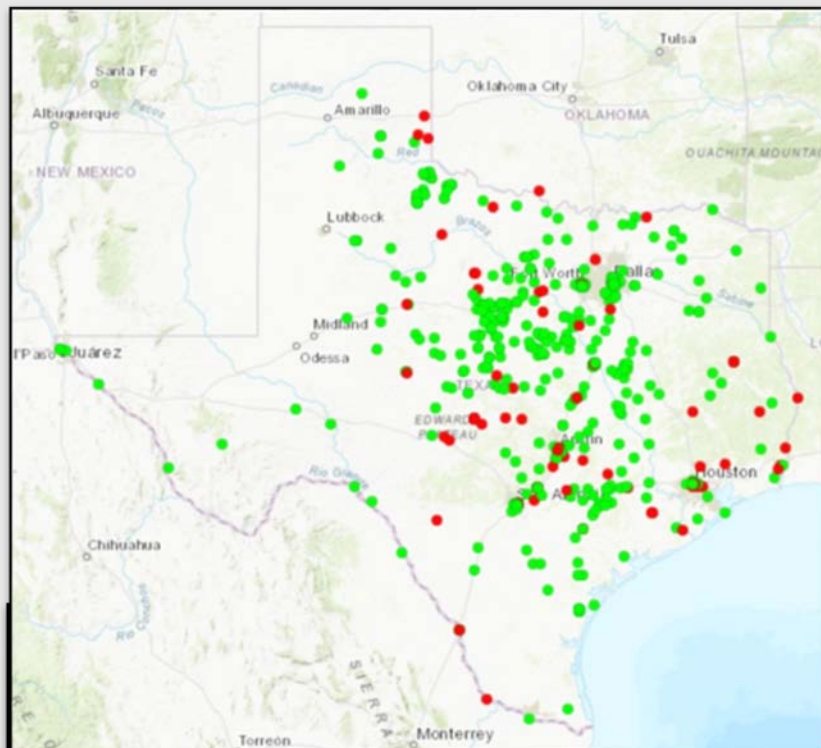
Search

Reset

Found: document(s) containing an exact match on using **Keyword** search

More Information

- [Highway Designation](#)
- [Highway Designations Glossary](#)
- [Minute Order Search](#)



What?

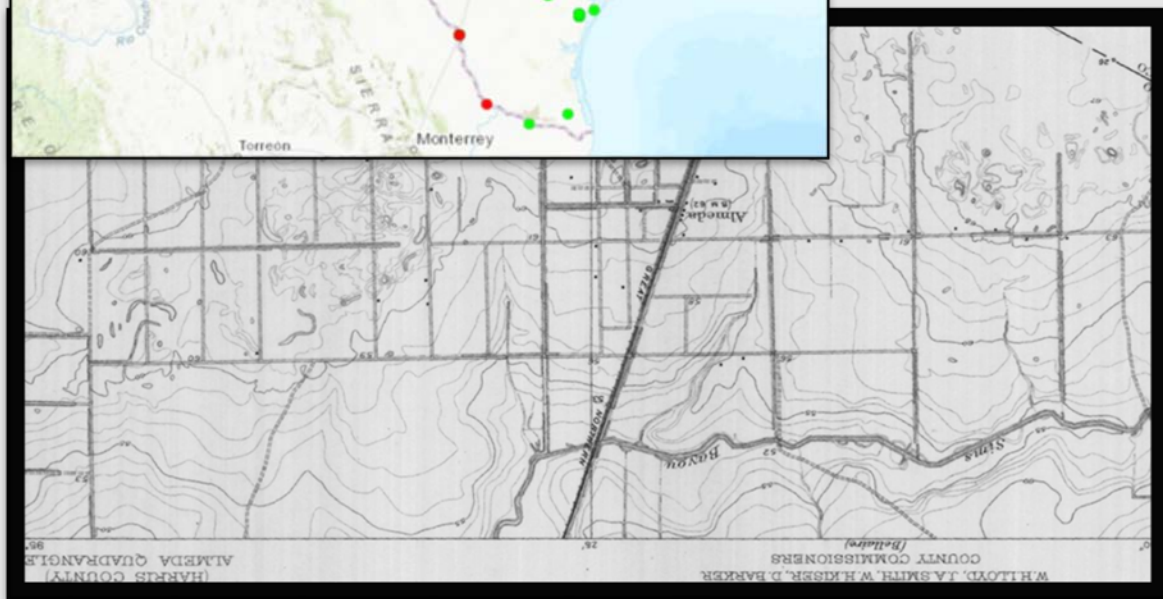
Interactive map of historic bridges in Texas.

Why?

Created to reference data of historically significant, or already examined, bridges in Texas.

Where?

[Texas Historic Bridges](#)



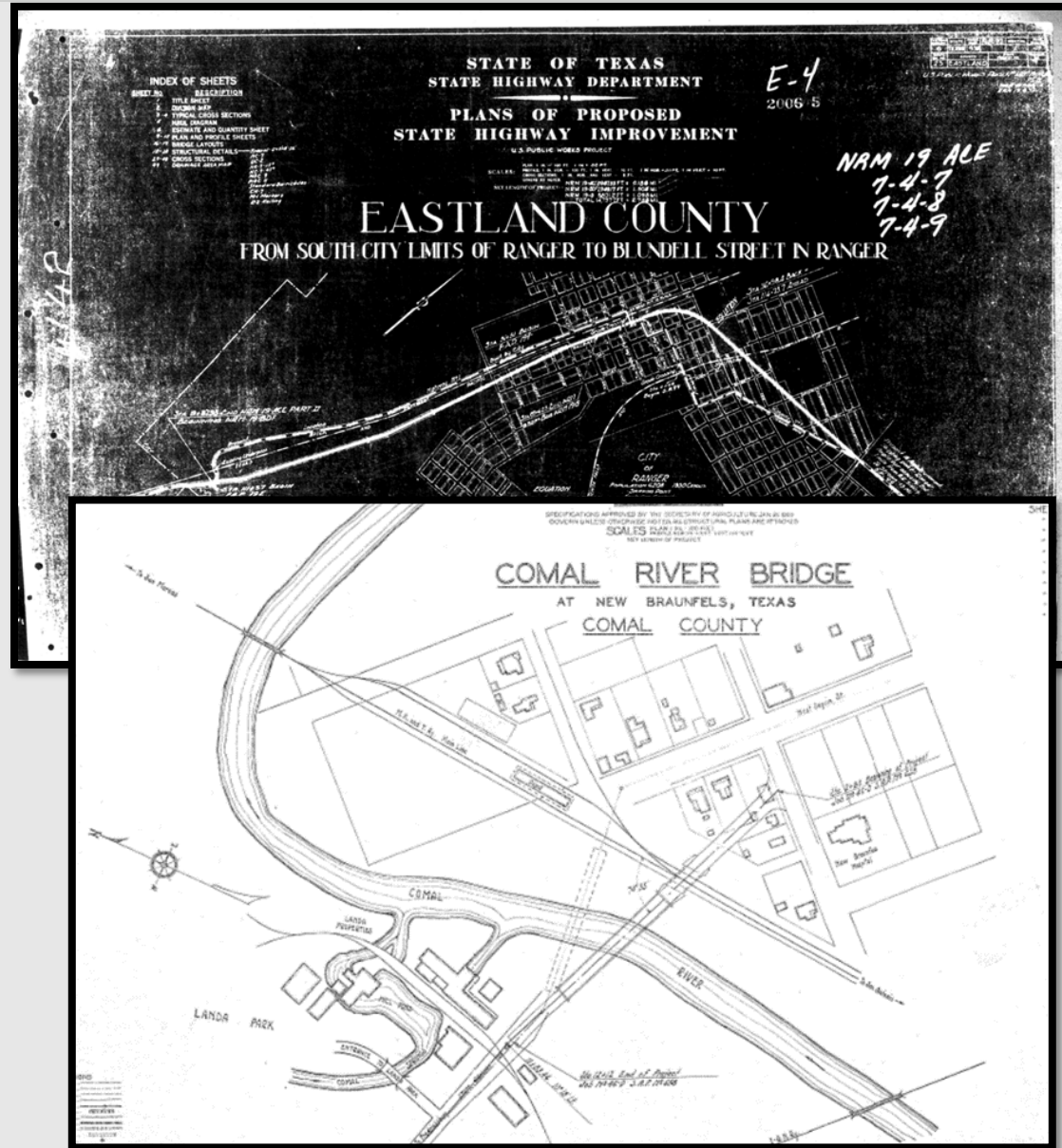
- Free to the public
- We transfer images digitally
- Request images by email or phone
- Photos are not available online, so make an appointment to visit the lab or email your requests.





Maps showing:

- Landscaping
- Names of adjacent owners
- Building outlines and uses
- Width of road
- Materials of road
- Historic maps







Who?

The WPA was created as a New Deal program in 1935. It employed many people to work on public works projects – like constructing buildings, roads, parks, and bridges.

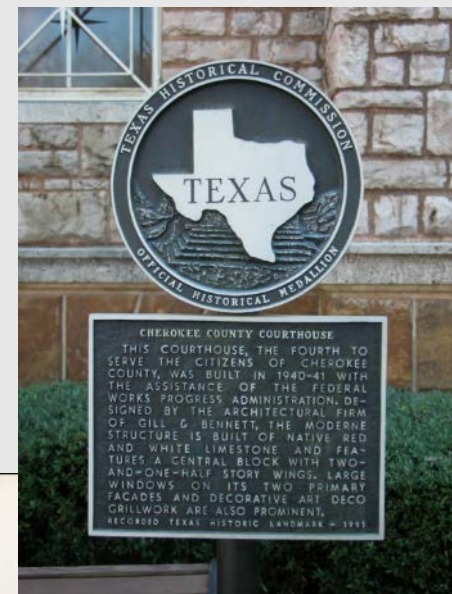
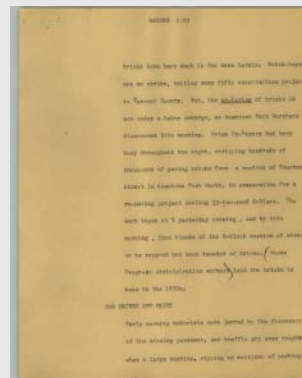
What?

Paper records include information about bridges, roads, and parks built by the WPA.

TxDOT has a research copy of all WPA records from the state on microfilm.

Where?

Contact TxDOT for more information!





What?

A historic context gives you a general overview about a topic during a specific time period in a particular place.

Who?

Educators, Teachers, Museum Specialists, Interested Researchers, You!

Topics?

- [Gas Stations](#)
- [Industrial Properties](#)
- [Irrigation in Lower Rio Grande Valley](#)
- [Historic Motels, 1950-1970](#)
- [South Texas Ranching](#)
- [Texas Aviation](#)
- [Roadside Parks](#)
- [Texas Adobe](#)
- [Historic Agricultural Processing Facilities](#)
- [Central Texas Agriculture](#)
- [Agricultural Landscape Development Along US 277](#)



Field of Dreams

Downs Fields in Austin, Texas is a treasure hidden in plain sight, despite its rich history. Scroll to learn more.

What?

Interactive tool with:

- Pictures
- Video links
- Maps
- Historic stories

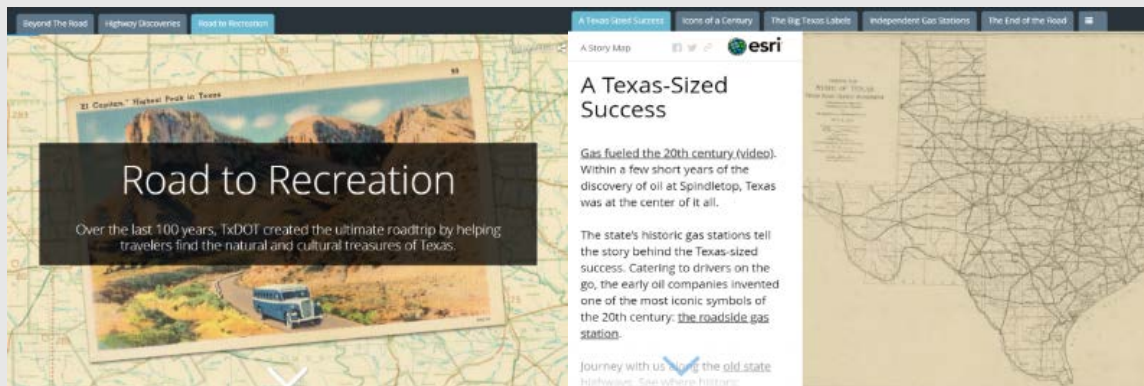
Topics?

- Historic Gas Stations
- Historic Highways
- Roadside Discoveries
- Segregated Austin
- Mammoth Watch 2018

Where?

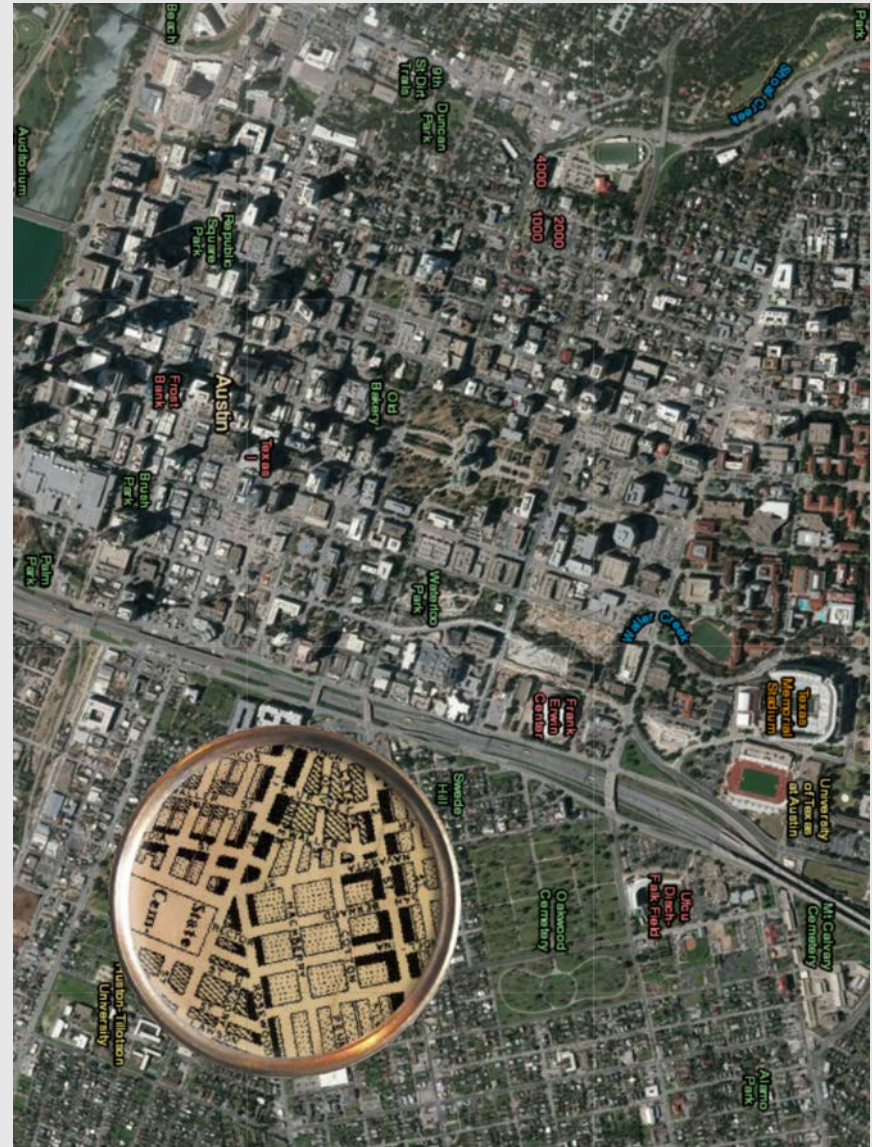
www.txdot.gov

Keyword: “Beyond the Road”





- Map Resources
- Postcard Collections
- Archeological Resources
- Other Archives





A few words about fair use and copyright from the government:

Fair use is a legal doctrine that promotes freedom of expression by permitting the unlicensed use of copyright-protected works in certain circumstances.

Governed by Section 107 of the US Copyright Act

Determined by 4 Factors:

- the purpose and character of your use
- the nature of the copyrighted work
- the amount and substantiality of the portion taken
- the effect of the use upon the potential market



An example of a disclaimer to protect your own institution's materials:

The Texas Department of Transportation (TxDOT) allows TxDOT owned and copyright protected photographs from the Media Production Photo Library to be copied or reproduced as a public service to the general public and the Texas tourism industry. All costs associated with copying or reproducing photographs are the sole responsibility of the person copying or reproducing the material. Any person or entity who reproduces and uses TxDOT photographs does so entirely at their own risk and may be subject to claims or litigation by other parties.

Written releases are not available from people or properties pictured in any photograph. Under no circumstances will TxDOT be responsible for, or share in liability for any claim from a third party's use of materials obtained from TxDOT.



- Use images to illustrate your point.
- Use high-quality and in focus images. Always.
- Use images with good contrasts for better accessibility.
- Make sure your chosen images illustrate the point you're making.
- In your research, what images stand out and make you do a double take?
- Always credit the image.
- Note if the image is altered or cropped in any way. (e.g. Detail of map by...)



MUSEUM

Overview
Texas Story Project
About Bullock
Bullock's Story
Visiting and Donations
Texas Through Your Lens
Map

THE TEXAS STORY PROJECT
Make your mark on Texas history

[Home](#) » [Discover](#) » [Artifact Gallery](#) » [Ransom Williams Family Recovered Artifacts](#) [SHARE](#)

RANSOM WILLIAMS FAMILY RECOVERED ARTIFACTS

Reconstruction-era African American family's story told through the remains of their farm

 [Print Page](#)

Lender
Courtesy Texas Archaeological Research Laboratory, The University of Texas at Austin

About

HOW THE BULLOCK MUSEUM MAKES USE OF THESE RESOURCES



From Dirt Road to
State Highway System

**Stuck
in
the Mud**

**ROADS
TO THE PAST**





Rebekah Dobrasko

Environmental Program Manager
Texas Department of Transportation
rebekah.dobrasko@txdot.gov

Kate Betz

Deputy Director of Interpretation
Bullock Texas State History Museum
kate.betz@thestoryoftexas.com

