

# SAM BELL MAXEY HOUSE

— STATE HISTORIC SITE —

*Paris, Texas*

## On-Site Activity

Grade 4

### Life Through Artifacts

In these suggested activities, students will examine artifacts to discover the lives of the Maxey residents, including Marilda Maxey and the household staff. Students will also explore the historic site and compare present day to historic resources to determine how the site has changed over the years.

### Maxey House Tour

During the tour, highlight house appointments, artifacts, and other material culture that give clues to the quality of life of Maxey family members. Examples might include hand-painted portraits, furniture, books, etc.

Questions to ask might include:

- How do the family rooms and the artifacts reflect this family's standing in the community?
- What can you learn about the Maxey family from their possessions?
- How do the artifacts tell you about the daily lives of both the family members and the house staff?
- What daily chores might have been challenging for house staff in the late 1800s? What parts of the chores would have been especially difficult? Why?

### Activity: Mapping Maxey

#### Historical Context

The 5-acre Maxey property included vegetable gardens, orchards, a vineyard, and livestock, including chickens, turkeys, and pigs. Marilda Maxey, wife of Sam Bell Maxey, started the gardens while the servants helped to maintain and expand them. The garden's decorative plants, including more than 200 varieties of roses, crape myrtle from Kentucky, and bearded irises, reflected the fashion of decorative gardens of the era. After Marilda's death, the Maxey's great-nephew Sam Bell Maxey Long inherited the home and began extensive remodeling in 1911. Maxey Long's wife, Lala, continued to care for the gardens.

Display/distribute the **1885 Bird's Eye View map** and the **satellite map** of the Maxey house. As a group, discuss what differences they notice on the two maps. What elements of the house and landscape appear in one map but not the other?

Distribute the **Maxey S. H. S. 1976 site plan**. Have students explore the grounds individually or in pairs and label the location and names of architectural and landscape elements they notice during their observations of the site.

812 SOUTH CHURCH ST.  
PARIS, TEXAS 75460  
P 903-785-5716 F 903-785-6716

visitsambellmaxeyhouse.com  
#TXTimeTravel  
storiedsites.com



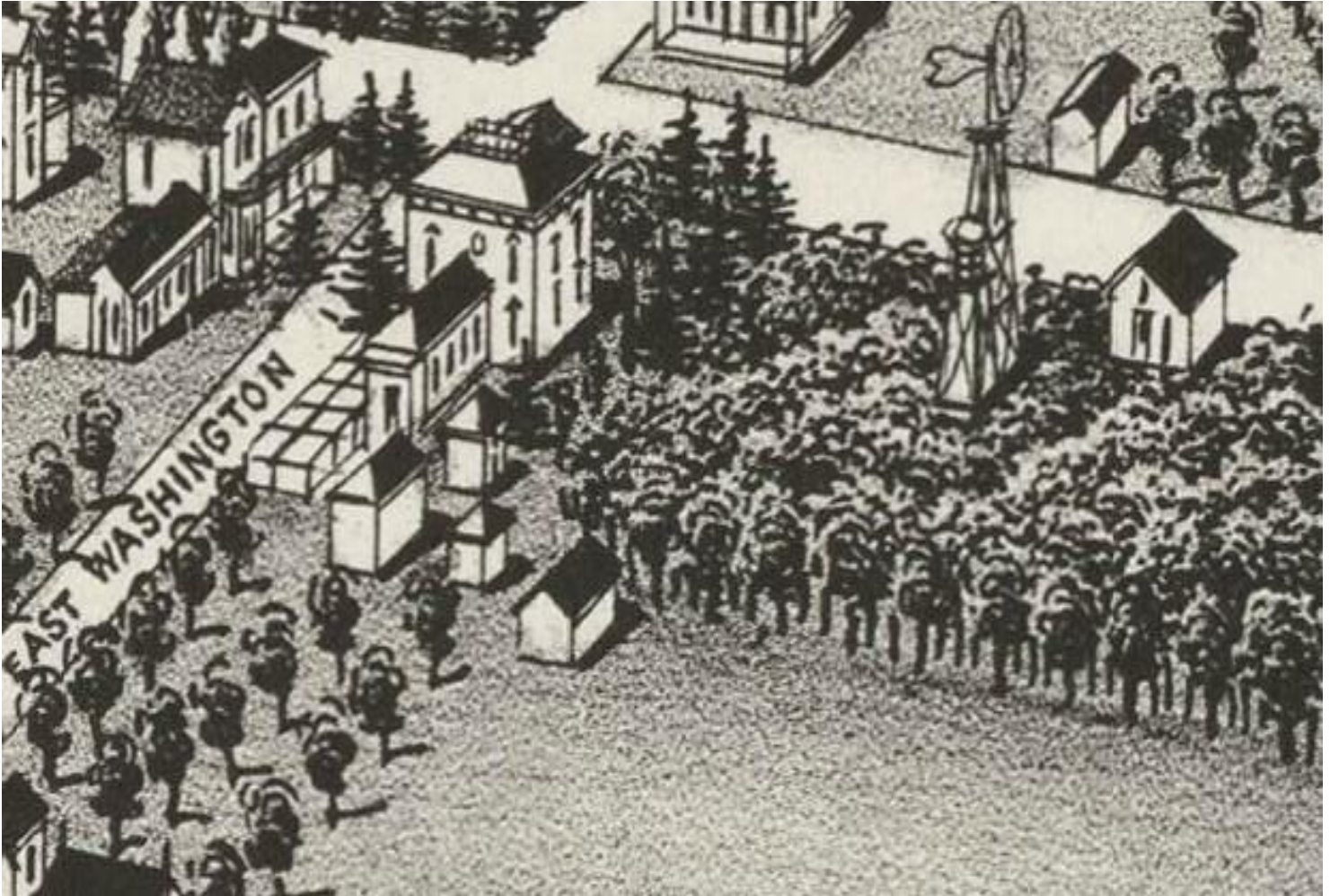
TEXAS  
HISTORICAL  
COMMISSION   
REAL PLACES TELLING REAL STORIES

# SAM BELL MAXEY HOUSE

— STATE HISTORIC SITE —

*Paris, Texas*

Activity Image: 1885 Bird's Eye View map from the back of the Maxey house



812 SOUTH CHURCH ST.  
PARIS, TEXAS 75460  
P 903-785-5716 F 903-785-6716

[visitsambellmaxeyhouse.com](http://visitsambellmaxeyhouse.com)  
#TXTimeTravel  
[storiedsites.com](http://storiedsites.com)



TEXAS  
HISTORICAL  
COMMISSION   
REAL PLACES TELLING REAL STORIES



# SAM BELL MAXEY HOUSE

— STATE HISTORIC SITE —

*Paris, Texas*

Activity Image: Satellite view of the Maxey House State Historic Site



812 SOUTH CHURCH ST.  
PARIS, TEXAS 75460  
P 903-785-5716 F 903-785-6716

[visitsambellmaxeyhouse.com](http://visitsambellmaxeyhouse.com)  
#TXTimeTravel  
[storiedsites.com](http://storiedsites.com)



TEXAS  
HISTORICAL  
COMMISSION   
REAL PLACES TELLING REAL STORIES

# SAM BELL MAXEY HOUSE

— STATE HISTORIC SITE —

*Paris, Texas*

**Activity Resource: Lala feeding the chickens**



812 SOUTH CHURCH ST.  
PARIS, TEXAS 75460  
P 903-785-5716 F 903-785-6716

[visitsambellmaxeyhouse.com](http://visitsambellmaxeyhouse.com)  
[#TXTimeTravel](https://twitter.com/TXTimeTravel)  
[storiedsites.com](http://storiedsites.com)



TEXAS  
HISTORICAL  
COMMISSION   
REAL PLACES TELLING REAL STORIES



# SAM BELL MAXEY HOUSE

— STATE HISTORIC SITE —

*Paris, Texas*

**Activity Image: Lala and cousin Baby Alice under the rose arbor**



812 SOUTH CHURCH ST.  
PARIS, TEXAS 75460  
P 903-785-5716 F 903-785-6716

[visitsambellmaxeyhouse.com](http://visitsambellmaxeyhouse.com)  
[#TXTimeTravel](https://twitter.com/TXTimeTravel)  
[storiedsites.com](http://storiedsites.com)



TEXAS  
HISTORICAL  
COMMISSION   
REAL PLACES TELLING REAL STORIES

# SAM BELL MAXEY HOUSE

— STATE HISTORIC SITE —

*Paris, Texas*

Activity Image: 1976 Site Plan of Sam Bell Maxey State Historic Site

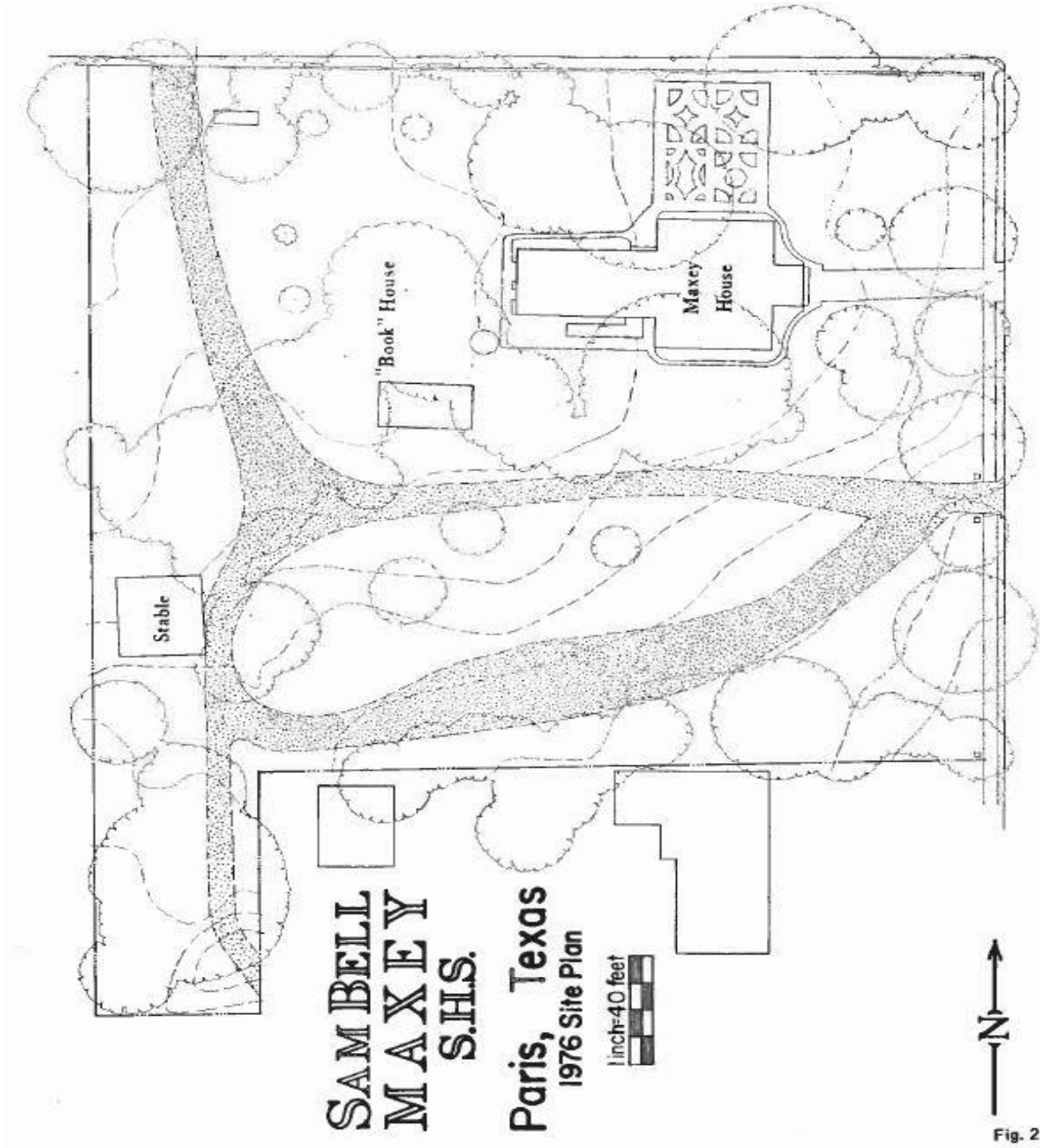


Fig. 2

812 SOUTH CHURCH ST.  
PARIS, TEXAS 75460  
P 903-785-5716 F 903-785-6716

[visitsambellmaxeyhouse.com](http://visitsambellmaxeyhouse.com)  
#TXTimeTravel  
[storiedsites.com](http://storiedsites.com)



TEXAS  
HISTORICAL  
COMMISSION   
REAL PLACES TELLING REAL STORIES